

更多内容敬请访问：
For More Information,
www.shsstech.com



SHENSHENG



上海申胜生物技术有限公司

地址：上海市陈翔路937号 (201802)
电话：+86 21 - 62716917
传真：+86 21 - 62716705
邮件：info@shsstech.com
网址：www.shsstech.com

Shanghai Shensheng Biotech Co., Ltd.

Add: 937 Chenxiang Rd, Shanghai, 201802, China
Tel: +86 21 - 62716917
Fax: +86 21 - 62716705
E-mail: info@shsstech.com
Website: www.shsstech.com

产品设计及型号更改恕不另行通知。
Product design and specifications subject to change without notice.

旋转蒸发器

Rotary Evaporator

双层玻璃反应釜

Jacketed Glass Reactor

双层过滤釜

Jacketed Glass Filter

多功能反应釜

Glass Heating Reactor

分液器

Glass Separator

配套设备

- 真空
- 冷热循环
- 恒温浴锅

Complementary Equipment

- Vacuum Pump
- Cooling/Heating Circulator
- Heating Bath

搅拌器

Overhead Stirrer

上海申胜生物技术有限公司

上海申胜生物技术有限公司成立于2000年，作为行业领先的实验室仪器和生化医药设备的专业制造商，我们追求卓越并不断创新，用户遍布全球30多个国家和地区。

研发中心与生产基地位于上海。主营产品为旋转蒸发器、玻璃反应釜、过滤釜、及相关配套的真空和冷热循环设备，主要应用于化学、制药、石化、化妆品、生物技术、特殊材料以及大学的研究和生产。

我们通过专注于优质可靠的产品和丰富的行业经验，减少您的工作负担和后顾之忧，让您能有更多的时间专注于科学研究。

上海申胜主要产品系列

旋转蒸发器	双层玻璃反应釜
双层过滤釜	分液器/单层玻璃釜
真空泵	加热/制冷循环泵
数控恒温浴锅	搅拌器



Shanghai Shensheng Biotech Co., Ltd.

As a leading manufacturer of laboratory equipment in China, we are an innovative company striving for excellence. Main products are Rotary Evaporator, Glass Reactor, Jacketed Glass Filter, Vacuum Pump and Heating & Cooling Circulator.

Shanghai Shensheng was founded in 2000 and owns a dedicated R&D team and factory site in Shanghai, China. With excellent quality and extensive industry experience, we support

clients in over 30 countries and regions from pharmaceutical research, chemical industry, petrochemical sector, cosmetics, special material, biology as well as university.

Product Line

Rotary Evaporator	Jacketed Glass Reactor
Jacketed Glass Filter	Glass Separator/Extractor
Vacuum Pump	Cooling/Heating Circulator
Heating Bath	Overhead Stirrer



1996 ~ 2000

上海申胜生物技术有限公司成立，向国内市场推出自主研发的R系列旋转蒸发器。

Shanghai Shensheng was founded and launched self-developed R-Series Rotary Evaporator in China market.

2003

推出国内第一台自主研发的双层玻璃反应釜。至今，该反应釜在客户现场仍保持着良好的运转状态。

Released the first made-in-China Jacketed Glass Reactor which is still well operated at client's site.

2004

注册“申胜科技”商标。旋转蒸发器的核心部件“聚四氟乙烯密封”研制成功，取代了丁腈橡胶密封，现已在全行业应用。

Registered trademark. PTFE seal was developed to replace NBR seal, which is widely applied in the whole industry now.

2006

首创将机械密封技术应用于旋转蒸发器和玻璃反应釜，实现了2mbar的真空度。

Initiated to apply Mechanical Seal technology to both Rotary Evaporator and Glass Reactor, max vacuum reaching <2mbar.

2009

上海申胜在俄罗斯、土耳其、拉脱维亚、白俄罗斯、印度授权设立代理商，覆盖整个东欧及中东市场。至今用户已遍布全球30多个国家和地区。

Dealership established in Russia, Turkey, Latvia, Belarus, India to cover the whole East Europe and Middle East market and now supporting clients in over 30 countries.

2011

上海申胜产品获得CE认证，进入西欧市场。

Got CE certificate and reach out to West Europe market.

2015

扩建上海研发中心与生产基地，提供配套用户生产工艺的成套集成系统和大规模定制化制造。

Expanded R&D center and manufacture plant in Shanghai to offer complete integrated equipment system and massive customization.

2017

推出双层热过滤反应釜及全自动化重结晶装置。

Released Jacketed Glass Filter and Automatic Re-crystallization Reaction Set.

您专注于研究，让我们来确保您的设备安全高效运行

You focus on research, we make sure you are well equipped

您的事业是科学研究，我们的专业是满足您的科研需要。为了让您能有更多的时间专注于科学研究，我们全力以赴提供必需的支持，让您不再因为设备的运行及性能烦恼。设计制造优质可靠的设备，提供全面完善的技术服务是我们的工作。

You do the research and our mission is to meet your research needs. In order to buy you more time to focus on your research, we are dedicated to support your needs and free you from worries about malfunction or inefficiency of the equipment. We offer reliable products and extensive service support.



品质承诺

- 上海工厂制造，实施各环节的质量控制
- 对每台设备均进行严格的出厂检验
- 设备平均使用寿命不少于5年
- 玻璃件均严用优质的高硼硅玻璃 GG-17
- 一年包修，终身保修
- 标准产品返修率低于2%

服务承诺

- 24小时响应时间
- 经济实用的配置方案及选型咨询
- 标准产品供货期不超过10天
- 交付准点率超过95%
- 约定上门安装与现场使用指导
- 定期上门维护保养

Our Quality Commitment

- Made in Shanghai with Total Quality Management
- Individual quality control for every unit
- Increased lifespan of over 5 years on average
- All glassware are made of Borosilicate Glass BG3.3
- One year warranty
- Product failure rate of standard unit lower than 2%

Our Service Commitment

- <24 hours response time for all inquiries
- Professional consulting service on solution
- Lead time <10 days for standard equipment
- On-time delivery for 95% of all shipments
- Installation and training on site
- Regular on-site maintenance service

目录 INDEX



P5

旋转蒸发器 Rotary Evaporator

0.1L – 50L旋转蒸发器
配套方案
常用选配件

Rotary Evaporator
Laboratory Solution
Spares & Accessories



P27

玻璃反应釜 Glass Reactor

双层玻璃反应釜
双层过滤釜
多功能玻璃反应釜
分液器/萃取釜

Jacketed Glass Reactor
Jacketed Glass Filter
Glass Heating Reactor
Separator/Extraction Reactor



P47

真空、制冷/加热循环泵、自动化集成 Vacuum, Heating/Cooling, Integration

真空泵
单制冷/单加热循环泵
加热制冷循环一体机
数控浴锅
自动化集成解决方案

Vacuum Pump
Cooling/Heating Circulator
Thermostat
Digital Heating Bath
Automation & Integration



P57

恒速搅拌器 Overhead Stirrer

数显搅拌器
强力搅拌器

Digital Display Stirrer
Strong Overhead Stirrer

旋转蒸发器

ROTARY EVAPORATOR

10 - 50L

❗ 长效高真空 ❗ Durable Vacuum Tight

❗ 零维护 ❗ Maintenance Free

❗ 高效率 ❗ High Efficiency

旋转蒸发器为反应创造负压与恒温环境，并通过恒速旋转使物料均匀受热，从而在蒸发瓶内壁上形成薄膜以提高蒸发速率。因此，真空度、恒温、旋转恒速是考量旋转蒸发器质量的三大指标。

大型旋转蒸发器（10 - 50L）适用于中试车间及工厂级别的反应使用。坚固、耐用和出色的性能是上海申胜产品最重要的特点，在此基础上，我们根据用户的使用环境及特点，将人性化设计融入产品之中。

针对防爆车间及工厂的防爆区，我们还提供整机电气防爆的旋转蒸发器，以满足用户对安全生产的需要。

Besides the capacity of evaporating flask, evaporation efficiency depends on vacuum level, accurate temperature control of heating bath, and constant speed of rotation, which defines the quality of Rotary Evaporator.

Along with ergonomic and practical design, features such as robustness, durability and excellent performance are the top priorities at *Shanghai Shensheng*.

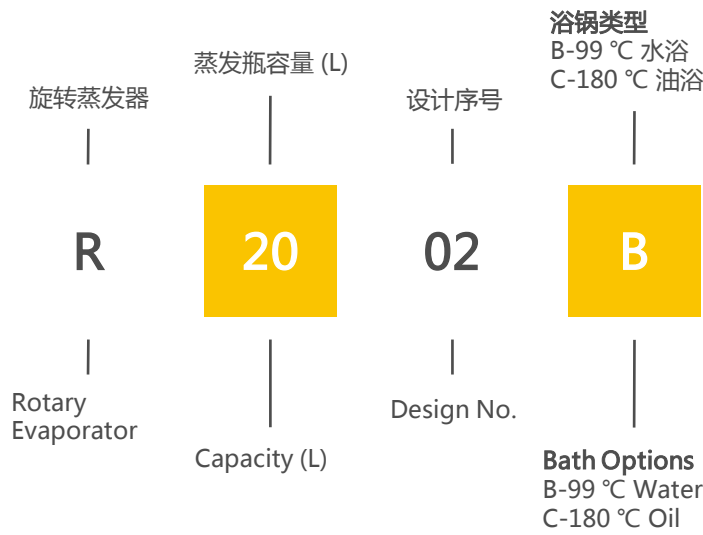
For pilot plants and industrial application, we recommend our Pilot Scale Rotary Evaporator (10L - 50L).

In compliance with safety standard of EX zone, we also offer EX Proof Rotary Evaporator.



旋转蒸发器 (中试级)

ROTARY EVAPORATOR



聚四氟加料阀
无需真空脂，在设备负压运转状态下进行连续清洁加料。

防冲弯管
预防物料意外暴沸冲入收集瓶而污染收集物。

PTFE Inlet Valve
Clean feeding during evaporation. No pollution by vacuum grease.

Bumping Tube
Prevent unexpected bumping into condenser and receiving flask.



不停机连续收集
通过阀门控制，不停机，并保持系统真空的条件下进行物料收集，实现连续工作。可配备双收集瓶，可互相切换以实现不间断连续收集物料。

Non-stop Receiving
No need to stop evaporation or release vacuum when discharging condensate. Easy valve control can help on continuous receiving. Two receiving flasks structure is available for option.



R2002B

(参数配置详见第12页) (For spec and configuration, please see P.14)



简洁操控+强劲扭力
控制面板简洁明了，使得操控简单快捷。
变频控制配合高扭力马达，在提供强劲扭力的同时，使得旋转平稳且精确可控，精细的传动结构又确保了转速的稳定性、耐用性和静音旋转。

Easy Control + Stable Rotation
Clear control panel ensures easy operation.
High torque motor with VFD controller provides stable rotation and precise speed control. Strong drive structure guarantees durability and low noise.



聚四氟主密封
不锈钢机头配备聚四氟乙烯端面密封，确保<2mbar 的高真空度。

PTFE Main Seal Assembly
PTFE seal assembly ensures vacuum level <2mbar.



聚四氟放料阀
不仅耐腐蚀且无需真空脂，放料过程对物料无污染。

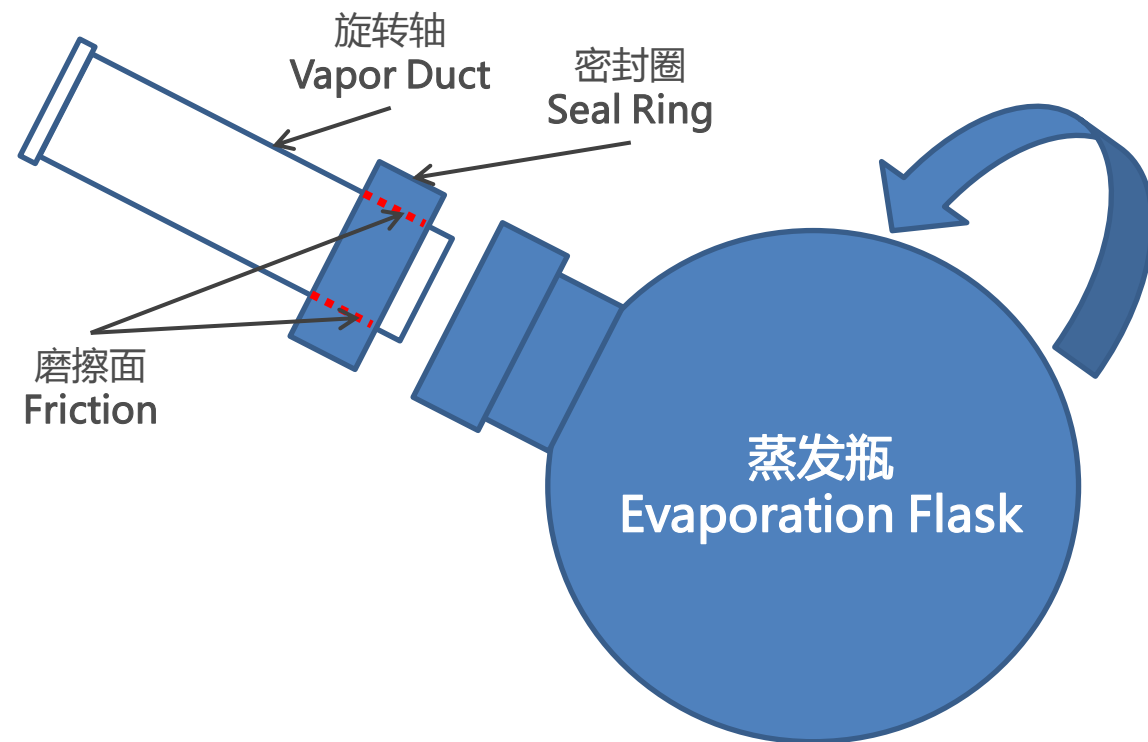
PTFE Discharge Valve
Resistant to corrosion and for clean discharge without any pollution risk to condensate by vacuum grease.



数控恒温浴锅+自动升降
PID控制配合PT100温度反馈，确保浴锅温度稳定。可根据需求，选择水浴（室温~99 °C）和油浴（室温~180 °C）。
通过一个按钮即可解决近40公斤（浴锅加水/油）的升降问题，减少您的工作负荷。

Motorized Lifting Heating Bath
PID control + PT100 feedback provide stable temperature. Water bath (RT~ 99 °C) and oil bath (RT~ 180 °C) for option. One button to free you from lifting the heating bath by hand (>40KG with water/oil filled).

旋转蒸发器（中试级）- 机械密封结构 ROTARY EVAPORATOR – MECHANICAL SEAL



注：蓝色为旋转部分，白色部分为静止部分
Notice: Blue – Rotation Part White – Stationary Part

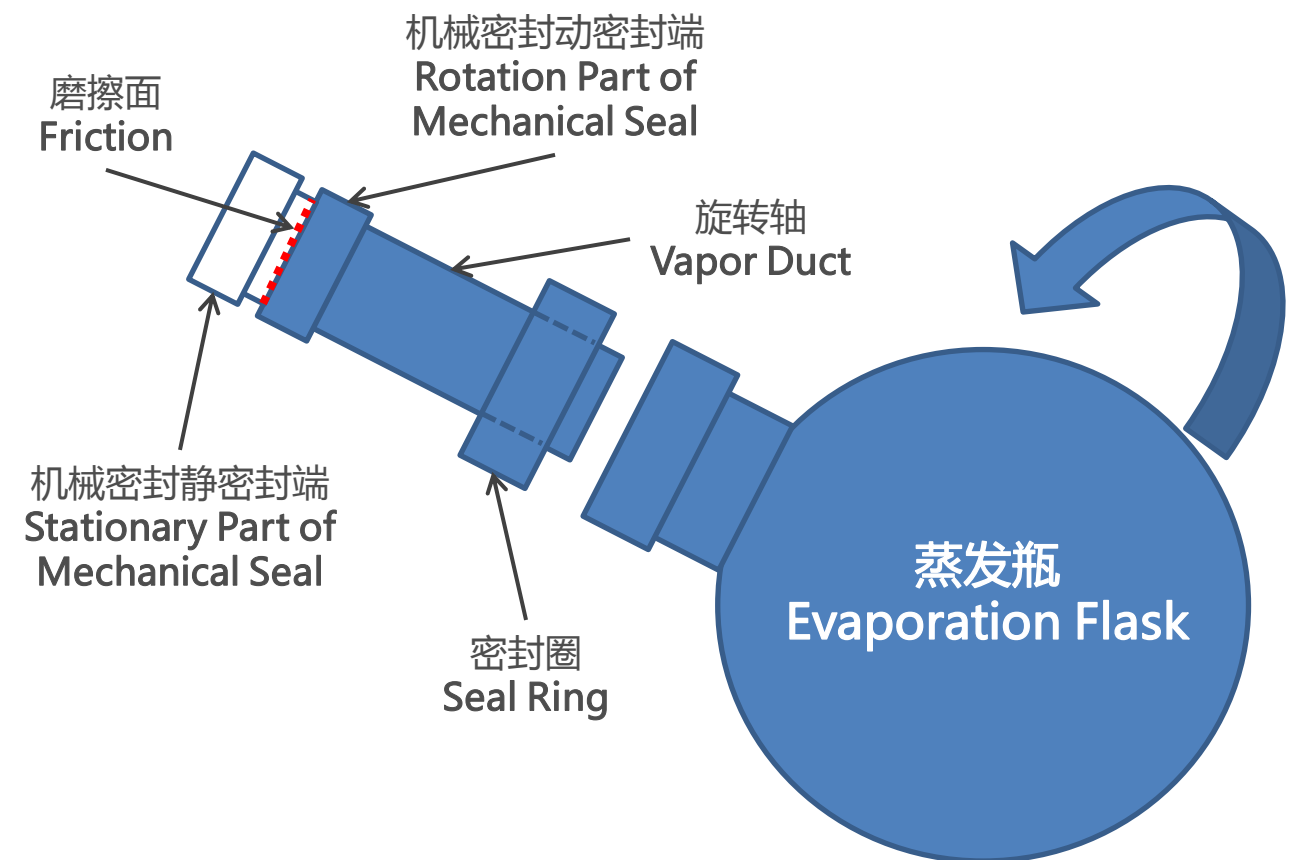
传统轴向密封

- 旋转轴与密封圈之间剧烈摩擦
- 真空耐用度低，使用寿命平均小于6个月
- 真空性能逐月下降，影响研发及生产成果
- 需要频繁维护及更换密封圈，拖累工作进度
- 密封圈不耐摩擦和腐蚀，产生碎屑污染物料
- 需要应用真空脂

Axis Seal

- Violent friction between vapor duct and seal ring
- Durability of vacuum tight is <6 months on average
- Vacuum performance gets weaker monthly
- Frequent maintenance and replacement of seal is required, interrupting working schedule
- Seal is vulnerable to be worn-out because of corrosion and friction, causing shredding pollution
- Vacuum grease is required

长效高真空 <2mbar | 零维护 | 超耐久 Vacuum Tight <2mbar | Maintenance Free | Durable



注：蓝色为旋转部分，白色部分为静止部分
Notice: Blue – Rotation Part White – Stationary Part

机械密封

- 旋转轴与密封圈之间无摩擦
- 真空度高达 <2mbar
- 真空耐用度极高，使用寿命长达5年以上
- 真空性能稳定
- 无需维护
- 无碎屑污染物料，耐腐蚀耐摩擦
- 无需真空脂

Mechanical Seal

- No friction between vapor duct and seal ring
- Max vacuum level is over 2mbar
- Excellent durability of vacuum tight with lifespan of >5 years on average
- Consistent vacuum performance
- Maintenance free
- No shredding
- Resist to corrosion and friction
- No vacuum grease needed

防爆型旋转蒸发器（中试级）

EX PROOF ROTARY EVAPORATOR



旋转蒸发器	蒸发瓶容量 (L)	设计序号	防爆型
R	20	02	EX
Rotary Evaporator	Capacity (L)	Design No.	EX Proof



防爆系统

当设备需要在防爆车间或防爆区内使用时，应当选择防爆型旋转蒸发器。
根据客户需要，我们提供完备的防爆升级，包括电机、变频调速器、浴锅温控和整机电气等防爆升级服务。

防爆级别：EXdIIBT4
防护等级：IP55
防腐等级：WF1

EX Proof

EX Proof is compulsory when rotary evaporator is stationed and operated in EX zone in which there is explosive gas or dust.
We offer EX proof upgrade on Motor, Rotary Speed Controller, Heating Bath and Wiring per user needs.

EX Proof Rate: EXdIIBT4
Ingress Protection Rate: IP55
Anticorrosion Rate: WF1

R2002EX



(参数配置详见第14页)
(For spec and configuration, please see P.14)

各种规格的旋转蒸发器 10 – 50L

ROTARY EVAPORATOR 10 – 50L

针对不同反应体量，我们提供10L、20L、30L、50L等四种规格的中试级旋转蒸发器，并可根据用户需求提供选配件及依照特定工艺定制化设备。

We provide 10L, 20L, 30L and 50L Rotary Evaporator (Pilot Scale) for different capacity needs. Optional configuration or even customization per specific reaction process is also available.



R1002B




一体式高效冷凝器
Compact Efficient Condenser



连续收集 - 单收集瓶
Non-stop Receiving by One Flask

基本参数		Parameters				旋转蒸发器 10L- 50L		ROTARY EVAPORATOR 10L - 50L	
	型号	Model	R1002B	R2002B	R3002B	R5002B			
防爆型号	Relevant EX Model		R1002EX	R2002EX	R3002EX	R5002EX			
蒸发瓶(L)	Evaporating Flask (L)		10L/F95	20L/F95	30L/F125	50L/F125			
收集瓶(L)	Receiving Flask (L)		5L 带底阀 Bottom Discharge	10L +3L带底阀 Bottom Discharge		20L +5L带底阀 Bottom Discharge			
冷凝面积(m²)	Condensing Surface (m²)		0.60	1.15	1.28	1.65			
蒸发效率(水)	Evaporating Efficiency (H₂O)		> 3L/h	> 5L/h	> 7L/h	> 9L/h			
马达功率(W)	Motor Power (W)		120 W	120 W	120 W	180 W			
旋转速度(rpm)	Rotation Speed (rpm)		0 - 110	0 - 110	0 - 110	0 - 110			
最高真空度(mbar)	Max Vacuum Level (mbar)		< 2 mbar (-0.0998MPa)						
玻璃材质	Glass Material		高硼硅玻璃 GG-17 Borosilicate Glass BG3.3						
浴锅功率(kW)	Heating Power (kW)		3 kW	4 kW	5 kW	6 kW			
浴锅温控范围及精度(°C)	Temp. Control Range & Accuracy (°C)		RT - 99°C (180°C) ±1°C						
浴锅尺寸，容量及材质	Bath Size, Capacity, Material		Φ35×25H, 22L, SUS304	Φ45×26H, 38L, SUS304	Φ50×27H, 48L, SUS304	Φ55×35H, 76L, SUS304			
浴锅升降行程(cm)	Bath Height Adjustment (cm)		14	16	18	18			
整机尺寸(cm)	Dimensions (cm)		100×50×180H	115×70×200H	120×75×210H	130×80×230H			
电源	Power Supply		220V/50Hz	220V/50Hz	380V/50Hz	380V/50Hz			

功能配置		Configurations			
	型号 Model	R1002B	R2002B	R3002B	R5002B
聚四氟组合密封	PTFE Assembly Seal	●	●	●	●
机械密封	Mechanical Seal	○	○	○	○
变频调速	VFD Rotation Speed Control	●	●	●	●
数字显示	Digital Display	转速，浴锅温度 Rotation Speed, Bath Temp.			
真空表	Vacuum Meter	●	●	●	●
浴锅自动升降	Bath Motorized Lift	●	●	●	●
浴锅手动升降	Bath Hand Lift	○	○	○	○
浴锅数字设定	Bath Digital Setting	●	●	●	●
聚四氟放料阀	PTFE Discharge Valve	●	●	●	●
聚四氟加料阀	PTFE Inlet Valve	●	●	●	●
连续收集	Non-stop Receiving	●	●	●	●
机架脚轮	Heavy Duty Casters	●	●	●	●
一体式高效冷凝器	Compact Efficient Condenser	●	●	●	●
防冲装置	Bumping Tube	●	●	●	●
油浴锅 (180°C)	Oil Bath (180°C)	○	○	○	○
双收集瓶	Two Receiving Flasks	○	●	●	●

安全防护		Safety Features				
	型号	Model	R1002B	R2002B	R3002B	R5002B
过电流保护	Over-current Protect		●	●	●	●
无火花电控系统	No-spark Electronic Control		●	●	●	●
防爆系统	EX Proof		○	○	○	○

标示含义：● - 标配，○ - 选配
Symbol Instruction: ● - Equipped , ○ - Optional

旋转蒸发器 (小试级)

ROTARY EVAPORATOR – LAB SCALE

3 - 5L



R502B

(参数配置详见第22页)

(For spec and configuration, please see P.22)



立式冷凝+蜗式导气瓶
立式冷凝器配备导气瓶，适用大多数反应，特别是低沸点溶剂，并防止冷凝的物料回流至蒸发瓶。

Vertical Condenser + Distribution Piece
Excellent for solvents with low boiling points. Prevent reverse flow of condensates to evaporating flask.



聚四氟乙烯放料阀
收集瓶配聚四氟乙烯放料阀，防腐蚀，无需真空脂，放料过程对物料无污染，实现清洁放料。

PTFE Discharge Valve on Receiving Flask
Resistant to corrosion. For clean discharge without any pollution risk to condensate by vacuum grease.



聚四氟乙烯组合密封，高真空，防腐耐磨
应用双面密封结构，密封材料采用优质聚四氟乙烯（杜邦特氟龙），使用寿命长，实现<2mbar的高真空度。

Teflon/PTFE Seal, Vacuum Tight, Durable
Durable Teflon/PTFE double seal enables max vacuum level reach <2mbar.



兼容3-5L的蒸发瓶容量
3L-5L的F50号法兰口的蒸发瓶均适用。

Compatible with 3-5L Evaporation Flask
3L-5L/F50 evaporation flask is applicable.



可升降浴锅，耐用可靠
浴锅升温迅速，控温精确度为1℃。通过升降手柄，根据所需高度平稳升降，避免冷凝器部分移动，安全可靠。水浴温控范围：0-99℃，油浴达180℃。

Lift Heating Bath, Durable & Reliable
Quick, precise heats water or oil and covers a wide temp. range from 0-99℃ (180℃, oil bath). Safe and easy lift mechanism to smoothly adjust bath height, preventing movement of condenser.

旋转蒸发器 (小试级)

ROTARY EVAPORATOR – LAB SCALE

0.1 - 2L



R205B

型号 - R205B

广受好评的经典机型，广泛应用于企业实验室领域，安全可靠，坚固耐用。

- 高性价比，适于大部分反应
- 浴锅手动升降
- 立式冷凝器
- 蒸发瓶尺寸：100 ml - 2000 ml
- 调速范围：20 - 180 rpm
- LED数显转速及温控，并配备真空表
- 参数配置详见第22页

Model – R205B

Most popular model. Highly recommended and widely used in R&D laboratory.

- Performance model for most reaction
- Bath hand lift mechanism
- Vertical condenser
- Capacity: 100ml – 2000ml
- Rotation Speed: 20 – 180rpm
- LED display of rotation speed and bath temp.
- For spec and configuration, please see P.22



聚四氟乙烯组合密封，高真空，防腐耐磨
密封材料采用优质聚四氟乙烯（杜邦特氟龙），使用寿命长，实现<2mbar的高真空度。

Teflon/PTFE Seal, Vacuum Tight, Durable
Durable Teflon/PTFE seal enables max vacuum level reach <2mbar.



立式冷凝+导气瓶

立式冷凝器配备导气瓶，适用大多数反应，特别是低沸点溶剂，并防止冷凝的物料回流至蒸发瓶。

Vertical Condenser + Distribution Piece
Excellent for solvents with low boiling points. Prevent reverse flow of condensates to evaporating flask.



卸瓶装置，操作方便

由于旋转蒸发器的真空工作，蒸发瓶往往会被紧紧吸在导气管上而难以卸下。卸瓶装置能平稳快速地拆卸蒸发瓶，防止蒸发瓶和导气管破损。

Easy Flask Removal

Quick and easy removal of evaporating flask with taper joint, to prevent broken of vapor duct and evaporating flask during disassemble.



可升降浴锅，数控恒温，耐用可靠

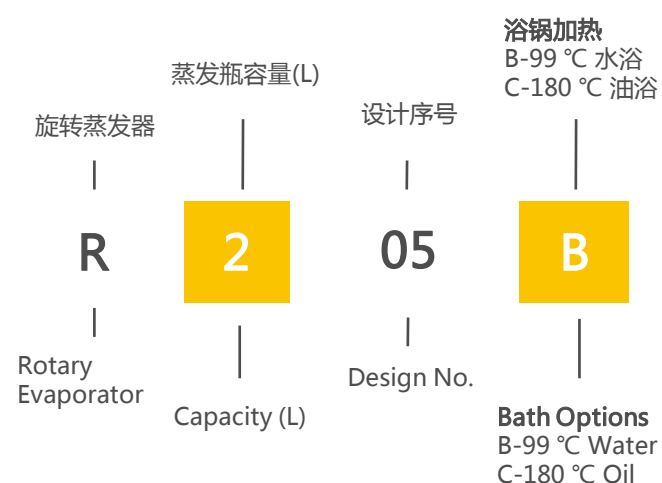
浴锅升温迅速，控温精确度为1℃，可持续显示实际温度和设定温度，并设有独立电源开关。

通过升降手柄，根据所需高度平稳升降，避免冷凝器部分移动，安全可靠。
水浴温控范围：0 - 99℃，油浴达180℃。

Lift Heating Bath, Durable & Reliable

Quick, precise heats water or oil and covers a wide temp. range from 0 - 99℃ (180℃, oil bath).

Continuous digital display of the actual temp. and temp. set point.
Safe and easy lift mechanism to smoothly adjust bath height, preventing movement of condenser.



旋转蒸发器（小试级） ROTARY EVAPORATOR – LAB SCALE

0.1 - 2L



R201B

型号 - R201B

畅销10多年的经典机型，广泛应用于科教领域，坚固耐用。

- 经济型，适用于标准反应
- 机架手动升降
- 斜式冷凝器
- 蒸发瓶尺寸：100 ml - 2000 ml
- 调速范围：20 – 180 rpm
- 聚四氟乙烯密封，最高真空度为 < 2 mbar
- 参数配置详见第22页

Model – R201B

Popular >10 years and widely used in scientific research and education.

- Economic model for standard reaction
- Motor hand lift mechanism
- Diagonal condenser
- Capacity: 100ml – 2000ml
- Rotation Speed: 20 – 180rpm
- Teflon seal, max vacuum <2 mbar
- For spec and configuration, please see P.22



斜式冷凝

斜式冷凝，适用标准反应，适用于高沸点溶剂和高度受限的环境。

Diagonal Condenser

For standard reaction with lowest height requirement. Excellent for solvents with high boiling points.



手动升降机架
Motor Hand Lift Mechanism



R202B

型号 - R202B

广受好评的经典机型，广泛应用于企业实验室领域，安全可靠，坚固耐用。

- 高性价比，适于大部分反应
- 机架手动升降
- 立式冷凝器
- 蒸发瓶尺寸：100 ml - 2000 ml
- 调速范围：20 – 180 rpm
- 聚四氟乙烯密封，最高真空度为 < 2 mbar
- 参数配置详见第22页

Model – R202B

Most popular model. Highly recommended and widely used in R&D laboratory.

- Performance model for most reaction
- Motor hand lift mechanism
- Vertical condenser
- Capacity: 100ml – 2000ml
- Rotation Speed: 20 – 180rpm
- Teflon seal, max vacuum <2 mbar
- For spec and configuration, please see P.22



立式冷凝 + 导气瓶
Vertical Condenser + Distribution Piece



数控恒温浴锅，耐用可靠
Digital Heating Bath, Durable & Reliable

旋转蒸发器（小试级）
ROTARY EVAPORATOR – LAB SCALE

0.1 - 2L



R205D

型号 - R205D

广受好评的经典机型，广泛应用于企业及大学实验室领域，安全可靠，坚固耐用。

- 高性价比，适于大部分反应
- 机架手动升降
- 一体式冷凝器，针对高沸点溶剂
- 蒸发瓶尺寸：100 ml - 2000 ml
- 调速范围：20 – 180 rpm
- LED数显转速及温控

Model – R205D

Most popular model. Highly recommended and widely used in R&D laboratory.

- Performance model for most reaction
- Motor hand lift mechanism
- Compact condenser for distillation of solvents with high boiling points
- Capacity: 100ml – 2000ml
- Rotation Speed: 20 – 180rpm
- LED display of rotation speed and bath temp.



手动升降机架
Motor Hand Lift Mechanism



一体式冷凝器
Compact Vertical Condenser

基本参数		Parameters					旋转蒸发器 0.1L – 5L		ROTARY EVAPORATOR 0.1L - 5L	
	型号	Model	R201B	R202B	R205D	R205B	R502B			
蒸发瓶(L)	Evaporating Flask (L)		0.5L+1L/NS24	0.5L+1L/NS29			5L/F50			
收集瓶(L)	Receiving Flask (L)		1L/NS24	1L/KS35	1L/KS35	1L/KS35	3L/KS35带底阀 Bottom Discharge			
冷凝面积(m²)	Condensing Surface (m²)		斜式 Diagonal 0.14m²	立式 Vertical 0.16m²	一体式 Compact 0.16m²	立式 Vertical 0.16m²	立式 Vertical 0.30m²			
蒸发效率(水)	Evaporating Efficiency (H₂O)		> 1.2L/h	> 1.2L/h	> 1.2L/h	> 1.2L/h	> 2L/h			
旋转速度(rpm)	Rotation Speed (rpm)		20 - 180	20 - 180	20 - 180	20 - 180	10 - 80			
最高真空度(mbar)	Max Vacuum Level (mbar)		< 2 mbar (-0.0998MPa)							
玻璃材质	Glass Material		高硼硅玻璃 GG-17 Borosilicate Glass BG3.3							
浴锅功率(kW)	Heating Power (kW)		1.5 kW	1.5 kW	1.5 kW	1.5 kW	2 kW			
浴锅温控范围 及精度(°C)	Temp. Control Range & Accuracy (°C)		0 - 99°C (180°C) ±1°C							
浴锅尺寸(cm) , 容量及材质	Bath Size, Capacity, Material		Φ25×15H, 7L, SUS304				Φ28×17H, 10L, SUS304			
升降行程(cm)	Height Adjustment (cm)		11	11	11	12	13			
整机尺寸(cm)	Dimensions (cm)		80×35×70H	70×35×92H	70×35×80H	70×35×92H	92x45x105H			
电源	Power Supply		220V/50Hz							

功能配置		Configurations						
	型号	Model	R201B	R202B	R205D	R205B	R502B	
聚四氟组合密封	PTFE Seal Assembly		●	●	●	●	●	
浴锅数字设定	Bath Digital Setting		●	●	●	●	●	
加料阀	Inlet Valve		●	●	●	●	●	
数字显示	Digital Display		浴锅温度 Bath Temp.		转速，浴锅温度 Rotation Speed, Bath Temp.			
升降类型	Lift Type		手动升降电机 Motor Hand Lift			手动升降浴锅 Bath Hand Lift		
聚四氟放料阀	PTFE Bottom Discharge Valve		/	/	/	/	●	
退瓶装置	Easy Flask Removal		/	●	●	●	/	
真空表	Vacuum Meter		○	○	○	●	●	
油浴锅 (180°C)	Oil Bath (180°C)		○	○	○	○	○	
防溅球	Anti-Splash Trap		○	○	○	○	○	
选配蒸发瓶	Optional Evaporating Flask		100ml, 250ml, 2L				3L	

安全防护		Safety Features						
	型号	Model	R201B	R202B	R205D	R205B	R502B	
过电流保护	Over-current Protection		●	●	●	●	●	
无火花电控系统	No-spark Electronic Control		●	●	●	●	●	

标示含义：/- 不适用，● - 标配，○ - 选配
Symbol Instruction: / - Not Applicable , ● - Equipped , ○ - Optional

一站式的旋转蒸发整体解决方案

All-in-one Laboratory Solution of Rotary Evaporator

除了旋转蒸发器，上海申胜还同时提供专门为旋转蒸发器配套的真空泵及制冷循环泵。使您从上海申胜一家公司，就能获得所有所需的相关设备，让您专注于研究。

Along with Rotary Evaporator, Shanghai Shensheng provides Vacuum Pump and Cooling Circulator which are designed for optimal use with Rotary Evaporator. We do a good job to ensure you are well equipped to have more time to focus on research.

实验室规模 Laboratory Scale



- 旋转蒸发器
Rotary Evaporator
R205B
- 制冷循环泵
Cooling Circulator
DL-2005
- 水循环真空泵
Vacuum Pump
SHB-3A

中试及生产规模 Pilot Scale


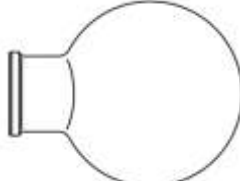


- 旋转蒸发器
Rotary Evaporator
R2002B
- 制冷循环泵
Cooling Circulator
LX-0700
- 水循环真空泵
Vacuum Pump
SHZ-95B




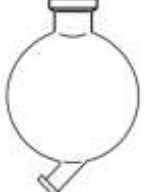
旋转蒸发器 — 常用选备件

SPARES & ACCESSORIES

蒸发瓶 Evaporating Flask

描述 Description	规格 Specification	备注 Remark
 锥磨口，梨形 Taper, Pear	100ml/NS29 或 or NS24 250ml/NS29 或 or NS24 500ml/NS29 或 or NS24 1L/NS29 或 or NS24 2L/NS29 或 or NS24	0.1L – 5L机型使用 For 0.1L – 5L Model
 法兰口，圆形 Flange, Round	3L/F50 5L/F50, 5L/F95 10L/F95, 10L/F125 20L/F95, 20L/F125 30L/F125 50L/F125	5L – 50L机型使用 For 5L – 50L Model F50 – 3L, 5L F95 – 10L, 20L F125 – 30L, 50L

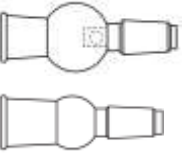
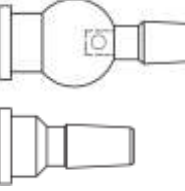
收集瓶 Receiving Flask

描述 Description	规格 Specification	备注 Remark
 锥磨口，圆形 Taper, Round	500ml/NS24 1L/NS24	R201B 机型使用 For R201B
 球磨口，圆形 Ball, Round	1L/KS35	0.1L – 5L机型使用 For 0.1L – 5L Model
 球磨口，圆形，下出料 Ball, Round, Bottom Discharge	3L/KS35	R502B 机型使用 For R502B
 法兰口，圆形，下出料 Flange, Round, Bottom Discharge	3L/F50, F36 5L/F50, F36 10L/F50, F36 20L/F50, F36	10L – 50L机型使用 For 10L – 50L Model




旋转蒸发器 — 常用选备件

SPARES & ACCESSORIES

防溅球与转接头 Anti-splash Trap & Joint Adaptor

	描述 Description	规格 Specification	备注 Remark
	锥磨口转锥磨口，防溅 Taper to Taper, Anti-splash	NS29 → NS29 NS29 → NS24 NS24 → NS24	0.1L – 2L机型使用 For 0.1L – 2L Model
	法兰口转锥磨口，防溅 Flange to Taper, Anti-splash	F50 → NS29 F50 → NS24	R502B 机型使用 For R502B

其他 Others

	描述 Description	规格 Specification	备注 Remark
	旋转轴（导气管） Vapor Duct	Φ22	0.1L – 5L机型使用 For 0.1L – 5L Model
		Φ50	10L – 20L机型使用 For 10L – 20L Model
		Φ55	30L – 50L机型使用 For 30L – 50L Model
	冷凝器 Condenser	冷凝面积(m ²) Condensing Surface (m ²) 0.16 0.30 0.60 1.15 1.28 1.65	根据相应机型选配 Subject to Model No.
	冷阱（干冰） Cold Trap (Dry Ice)		适用于低沸点溶剂蒸发 For distillation of solvents with low boiling point

其他 Others

	描述 Description	规格 Specification	备注 Remark
	放料阀 Discharge Valve	F36	5L – 50L机型使用 For 5L – 50L Model
	四通瓶 Distribution Piece	标准型 涡轮型 回流型 防冲型 Standard Turbo Reflux Bumping	根据相应机型选配 Subject to Model No.
	加料管 Inlet Valve	NS19	0.1L – 5L机型使用 For 0.1L – 5L Model
	单/双岔阀 Branching Piece	单岔阀 双岔阀 Single Branching Dual Branching	10L – 50L机型使用 双岔阀应用于双收集瓶 For 10L – 50L Model Dual Branching for Two Receiving Flasks
	主密封 Main Seal	Φ50	0.1L – 5L机型使用 For 0.1L – 5L Model
		Φ95	10L – 20L机型使用 For 10L – 20L Model
		Φ125	30L – 50L机型使用 For 30L – 50L Model
	O型圈 O-ring	丁晴胶 氟橡胶 包氟橡胶 全氟橡胶 NBR FKM FEP FFKM	根据相应机型选配 Subject to Solvents Used
	紧固件 Clamp	标口夹 标口夹 磨口夹 法兰 法兰 法兰 Taper Clip NS24 Taper Clip NS29 Ball Clamp KS35 Flange F36 Flange F50 Flange F60	根据相应机型选配 Subject to Model No.

双层玻璃反应釜

JACKETED GLASS REACTOR

10 - 100L

双层玻璃反应釜通过在夹层内通入冷热源，可在密封的条件下，进行加热和制冷合成反应。通过配置各种玻璃仪器，可进行回流、减压蒸馏、分液、精馏、结晶等各种反应。耐温、防腐、高真空、搅拌无死角是衡量反应釜的重要指标。

With heating and cooling source circulating in jacket, Jacketed Glass Reactor is applied for heating and cooling synthesis reaction in vacuum tight condition. Reflux, distillation under vacuum, separation, rectification, crystallization are also available with appropriate configuration. Resist to thermal shock and chemicals, vacuum tight and no dead space define the quality of reactor.

双层反应釜	机械搅拌	容量(L)
JR	- S	30
Jacketed Glass Reactor	Overhead Stirrer	Capacity (L)



(参数配置详见第32页)

(For spec and configuration, please see P.32)



机械密封，实现<2mbar的高真空度
Mechanical Seal, Vacuum up to <2mbar



聚四氟下展式放料阀，无死角，无渗漏
适用于固液放料

PTFE Flush Drain Valve, No Dead Space
For Solid + Liquid Discharge



聚四氟乙烯釜盖，使用寿命超过十年，高精度带来更好的密封性 (<2mbar) 和绝佳的搅拌平稳性

PTFE Lid with Lifespan >10years, Vacuum Tight up to <2mbar and Excellent Stirring Stability

釜盖开口 (可根据用户要求定制)

- 固料加料口 — 开关方便，并配有泄压阀
- 液料加料口 — 真空抽入液体物料，也可作泄压阀
- 温度计 — 配备PT100数显温度计
- 冷凝器 — 可加配分流瓶或分水蒸馏收集
- 恒压漏斗滴加 — 可控制定量定速液体加料

Nozzles on Lid (Customizable per request)

- Solid feed nozzle with vacuum release valve
- Liquid feed valve – For liquid feeding and vacuum release
- Thermometer – PT100 digital display thermometer
- Condenser – Optional Distillation Piece or Distillation Separation Receiving
- Funnel – Control liquid feeding speed and volume



聚四氟双层搅拌棒，实现充分搅拌
Dual PTFE Agitators for Efficient Stirring



变频控制+减速电机，扭力大，精准控速
VFD Controller + Gear Motor, Large Torque with Precise Speed Control

双层玻璃反应釜 – 配备不同的冷凝系统

JACKETED GLASS REACTOR – OPTIONAL CONDENSING CONFIGURATION

10 - 100L



冷凝器+分流瓶

分流瓶能通过简单的阀门操作，能快速切换回流与蒸馏。

Condenser + Distillation Piece

To switch between reflux and distillation by easy operation of valve.



固料加料口

直径60mm的固料加料口，配备了聚四氟口塞。口塞顶端有泄压阀，便于泄压后打开加料口。

Solid Feeding Nozzle

Big size up to 60mm of the solid feeding nozzle is with PTFE stopper which has vacuum release valve for opening up.



冷凝器+分水蒸馏收集

同时实现分水和蒸馏收集。通过阀门控制，不停机，并保持系统真空的条件下进行收集，实现连续工作。

Distillation Separation Receiving

For both separation and distillation receiving. No need to stop reaction or release vacuum when discharging condensate. Easy valve control can help on continuous receiving.



聚四氟放料阀

不仅耐腐蚀且无需真空脂，放料过程对物料无污染。

PTFE Discharge Valve

Resistant to corrosion and for clean discharge without any pollution risk.

防爆型双层玻璃反应釜



EX PROOF JACKETED GLASS REACTOR

10 - 100L



JR-S50EX



防爆系统 防爆区存在易燃易爆的气体及粉尘，当反应釜需要在防爆区内使用时，全面的电气防爆是必须的！我们提供完备的防爆升级，包括电机、变频调速器和整机电气等防爆升级服务。

防爆级别：EXdIIBT4
防护等级：IP55
防腐等级：WF1

EX Proof EX Proof is compulsory when jacketed glass reactor is stationed and operated in EX Zone in which there is explosive gas or dust. We offer high level of EX proof upgrade on Motor, Rotary Speed Controller, and Wiring per user needs.

EX Proof Rate: EXdIIBT4
Ingress Protection Rate: IP55
Anticorrosion Rate: WF1

基本参数		Parameters					双层玻璃反应釜 10L - 100L		JACKETED GLASS REACTOR 10L - 100L	
	型号	Model	JR - S10	JR - S20	JR - S30	JR - S50	JR - S100			
反应釜容量(L)	Capacity (L)		10L	20L	30L	50L	100L			
釜口直径(mm)	Lid Diameter (mm)		265 mm	265 mm	265 mm	265 mm	340 mm			
底阀出料口直径(mm)	Bottom Valve Diameter (mm)		25mm	25mm	25mm	25mm	25mm			
釜盖接口尺寸与数量	Nozzle Size & No. on Lid		6 (NS24+NS29+NS34×2+DN50+DN60)							
可耐反应温度(°C)	Temp. Range (°C)		-90 - 250°C							
最高真空度(mbar)	Max Vacuum Level (mbar)		< 2 mbar (-0.0998MPa)							
搅拌功率(W)	Stirring Power (W)		120 W	120 W	120 W	180 W	180 W			
转速(rpm)	Rotation Speed (rpm)		20 - 600	20 - 600	20 - 600	20 - 600	20 - 600			
搅拌棒直径(mm)	Diameter of Stirrer Shaft (mm)		20mm	20mm	20mm	25mm	25mm			
玻璃材质	Glass Material		高硼硅玻璃 GG-17 Borosilicate Glass BG3.3							
机架材质	Frame Material		SUS304							
搅拌棒材质	Stirring Shaft Material		304不锈钢内芯, 外包聚四氟乙烯 SUS304 & PTFE Coated							
整机尺寸(cm)	Dimension (cm)		65×52×160H	72×60×170H	77×64×180H	85×70×195H	95×80×230H			
电源	Power Supply		220V/50Hz							

功能配置		Configurations						
	型号	Model	JR - S10	JR - S20	JR - S30	JR - S50	JR - S100	
变频调速	VFD Rotation Speed Control		●	●	●	●	●	
齿轮减速	Gearbox		●	●	●	●	●	
数字显示	Digital Display		转速，釜体物料温度					Rotation Speed, Reactor Temp.
SiC+PTFE机械密封	SiC+PTFE Mechanical Seal		●	●	●	●	●	
聚四氟乙烯釜盖	PTFE Lid		●	●	●	●	●	
下展式聚四氟放料阀	PTFE Flush Drain Valve		●	●	●	●	●	
直放式聚四氟放料阀	PTFE Drain Valve		○	○	○	○	○	
PT100 数显温度计	PT100 Digital Thermometer		●	●	●	●	●	
真空表	Vacuum Meter		●	●	●	●	●	
搅拌头类型	Agitator Type		螺旋式		螺旋式+下压式			Propeller + Turbine
双搅拌头	Dual Agitators		○	○	●	●	●	
高粘度防腐搅拌棒	High Viscosity Agitator		○	○	○	○	○	
回流冷凝	Reflux Condensing		0.4m ²	0.4m ²	0.6m ²	0.6m ²	0.8m ²	
恒压漏斗	Pressure Equalizing Funnel		500ml	1000ml	1000ml	2000ml	2000ml	
液料加料阀	Liquid Feeding Valve		NS29	NS29	NS29	NS29	NS29	
固料加料口	Solid Feeding Nozzle		DN60	DN60	DN60	DN60	DN60	
5L滴加系统	Dripping System (5L)		○	○	○	○	○	
蒸馏分流瓶	Distillation Piece		○	○	○	○	○	
外接大容量蒸馏收集	Distillation Receiving		○ (3L)	○ (5L)	○ (10L)	○ (10L)	○ (20L)	
分水蒸馏收集	Distillation Separation Receiving		○ (3L)	○ (5L)	○ (10L)	○ (10L)	○ (20L)	
精馏收集	Rectification Receiving		○	○	○	○	○	
保温套	Insulation Cape		○	○	○	○	○	
聚四氟乙烯挡流板	PTFE Baffles		○	○	○	○	○	
高强度机架脚轮	Heavy Duty Lockable Casters		●	●	●	●	●	
聚四氟防腐机架涂层	PTFE Coated Frame		○	○	○	○	○	

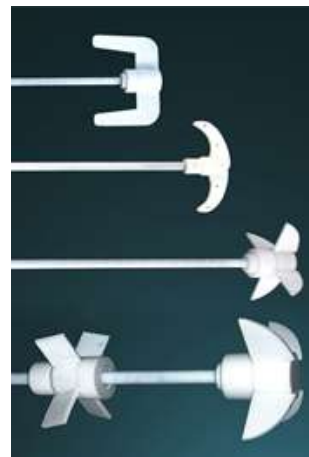
安全防护		Safety Features						
	型号	Model	JR - S10	JR - S20	JR - S30	JR - S50	JR - S100	
过电流保护	Over-current Protection		●	●	●	●	●	
无火花电控系统	No-spark Electronic Control		●	●	●	●	●	
防爆系统	EX Proof		○	○	○	○	○	

标示含义：/- 不适用，● - 标配，○ - 选配
Symbol Instruction: / - Not Applicable，● - Equipped，○ - Optional

双层玻璃反应釜 – 选配件

OPTIONAL CONFIGURATION

10 - 100L



多种搅拌桨叶类型
锚式、螺旋式、下压式等多种搅拌桨可供选择。

Agitators for Option
Blade shape of agitator, anchor, turbine, propeller... can be chosen.



高粘度防腐搅拌棒
喷涂聚四氟的全不锈钢搅拌桨叶，应对高粘度。

High Viscosity Agitator
SUS304 blade coated with PTFE to ensure hardness against high viscosity.



保温套
缓解反应过程中与环境的热交换，并配有视窗。

Insulation Cape
Reduce heat exchange with atmosphere. Window equipped for observation.



三层玻璃釜体
添加真空层，缓解导热层与环境的热交换。

Double Jacketed Glass
Vacuum layer is added to reduce heat exchange with atmosphere.



聚四氟乙烯挡流板
通过截流，有效阻止漩涡生成，实现充分搅拌。拆装便利，耐腐蚀可靠。

PTFE Baffles
To prevent vortex for efficient stirring. Resist to chemicals and easy to be detached.



5L滴加系统
更大容量的液料滴加，流速及流量可控。

5L Dripping System
Liquid dripping with controllable feeding speed and volume.



过滤装置 - 快拆式
滤膜更换方便快捷，过滤支架能快速装卸。

Detachable Bottom Filter
Filter membrane can be quickly changed and the whole structure is also easily detachable.



外接大容量蒸馏收集
针对大容量的蒸馏，并配有不停机连续收集。

Distillation Receiving
For big volume distillation receiving only. Discharge can be done without releasing vacuum of the whole reactor.

台式双层玻璃反应釜

BENCHTOP JACKETED GLASS REACTOR

1 - 5L



对于小批量处理，或空间有限的实验环境，台式双层玻璃反应釜更为适用。

即使体积小，但功能配置与大型机相同，保证实验需求。配备坚固耐用的支架，确保机体平稳。

For small quantities or limited space requirements, we offer Benchtop Jacketed Glass Reactor (1L - 5L).

Despite the capacity, benchtop reactor has the same functions as pilot scale reactor to meet users' need, and is equipped with robust SUS304 frame to guarantee the stability of the whole structure.



机械密封
防腐耐磨，实现 <2mbar 的高真空度。

釜盖功能配置
快开法兰卡箍
NS24 回流冷凝器
NS24 恒压漏斗
NS19 液料加料
NS19 温度计套管

Mechanical Seal
Ensures max vacuum level of <2mbar.

Lid Configuration
Quick-open Clamp
NS24 Condenser
NS24 Dripping Funnel
NS19 Liquid Feed Valve
NS19 Thermowell

台式双层玻璃反应釜

BENCHTOP JACKETED GLASS REACTOR

1 - 5L



JR-S5



聚四氟乙烯釜盖，使用寿命超过十年，高精度带来更好的密封性（<2mbar）和绝佳的搅拌平稳性

碳化硅和聚四氟乙烯组合机械密封
防腐耐磨，使用寿命>5年，实现<2mbar的高真空度。

釜盖功能配置
快开法兰卡箍，便于釜盖装卸
NS29 回流冷凝器
NS24 恒压漏斗
NS19 液体加料
NS19 温度计套管（可配数显温度计）

PTFE Lid with Lifespan >10years, Vacuum Tight up to <2mbar and Excellent Stirring Stability

SiC+PTFE Mechanical Seal
Ensures max vacuum level of <2mbar.
Resist to chemicals
Durable with lifespan >5 years.

Lid Configuration
Quick-open Clamp for Easy Operation
NS29 Reflux Condenser
NS24 Pressure Equalizing Funnel
NS19 Liquid Feeding Valve
NS19 Thermowell (Optional Digital Thermometer)

下展式聚四氟放料阀 – 无死体积
PTFE Flush Drain Valve – No Dead Space

基本参数		Parameters			双层玻璃反应釜 1L – 5L JACKETED GLASS REACTOR 1L - 5L		
		型号	Model	JR - S1	JR - S2	JR - S5	
反应釜容量(L)	Capacity (L)			1L	2L	5L	
釜口直径(mm)	Lid Diameter (mm)			150 mm	150 mm	180 mm	
底阀出料口直径(mm)	Bottom Valve Diameter (mm)			10mm	10mm	10mm	
釜盖接口尺寸与数量	Nozzle Size & No. on Lid			4 (NS19×2+NS24×2)	4 (NS19×2+NS24×2)	4 (NS19×2+NS24+NS29)	
能耐反应温度(°C)	Temp. Range (°C)			-90 - 250°C			
最高真空度(mbar)	Max Vacuum Level (mbar)			< 2 mbar (-0.0998MPa)			
搅拌功率(W)	Stirring Power (W)			90 W	90 W	90 W	
转速(rpm)	Rotation Speed (rpm)			50 - 1200	50 - 1200	50 - 1200	
搅拌棒直径(mm)	Diameter of Stirrer Shaft (mm)			6mm	6mm	10mm	
玻璃材质	Glass Material			高硼硅玻璃 GG-17 Borosilicate Glass BG3.3			
机架材质	Frame Material			SUS304			
搅拌棒材质	Stirring Shaft Material			不锈钢内芯，外包聚四氟乙烯 SUS304 & PTFE Coated			
整机尺寸(cm)	Dimension (cm)			35×46×96H	35×46×104H	38×50×110H	
电源	Power Supply			220V/50Hz	220V/50Hz	220V/50Hz	

功能配置		Configurations					
		型号	Model	JR - S1	JR - S2	JR - S5	
SiC+PTFE机械密封	SiC+PTFE Mechanical Seal			●	●	●	
转速数字显示	Digital Display of Rotation Speed			●	●	●	
下展式聚四氟放料阀	PTFE Flush Drain Valve			●	●	●	
回流冷凝	Reflux Condensing			0.1m ²	0.1m ²	0.14m ²	
恒压漏斗	Pressure Equalizing Funnel			250ml	250ml	250ml	
液料加料阀	Liquid Feeding Valve			NS19	NS19	NS19	
温度计套管	Thermowell			●	●	●	
玻璃釜盖	Glass Lid			●	●	○	
聚四氟乙烯釜盖	PTFE Lid			○	○	●	
真空表	Vacuum Meter			/	/	●	
搅拌头类型	Agitator Type			锚式 Anchor	锚式 Anchor	锚式 Anchor	
蒸馏分流瓶	Distillation Piece			○	○	○	
外接大容量蒸馏收集	Distillation Receiving			○ (0.5L)	○ (0.5L)	○ (1L)	
分水蒸馏收集	Distillation Separation Receiving			○ (0.5L)	○ (0.5L)	○ (1L)	
精馏收集	Rectification Receiving			○	○	○	
数显温度计	Digital Display Thermometer			○	○	○	
聚四氟防腐机架涂层	PTFE Coated Frame			○	○	○	

安全防护		Safety Features					
		型号	Model	JR - S1	JR - S2	JR - S5	
过电流保护	Over-current Protection			●	●	●	
无火花电控系统	No-spark Electronic Control			●	●	●	
防爆系统	EX Proof			○	○	○	

标示含义：/- 不适用，● - 标配，○ - 选配
Symbol Instruction: / - Not Applicable，● - Equipped，○ - Optional

双层过滤釜 - 热过滤

JACKETED GLASS FILTER

2- 50L

在进行夹套加热和制冷反应后可直接在釜内完成过滤。
特别适用于极易结晶的物料反应后的热过滤，即保持固液混合物温度在一定范围内的过滤过程。良好的密封性，双层过滤反应釜也可做多肽反应罐。

All-in-one Unit - Reaction and filtration can be finished in the same reactor. Especially for the insulated filtration of material vulnerable to crystallization. It can also be used as polypeptide reactor.

双层过滤釜	机械搅拌	容量(L)
FR	- S	20
Jacketed Glass Filter	Overhead Stirrer	Capacity (L)

- !

高效便捷
- !

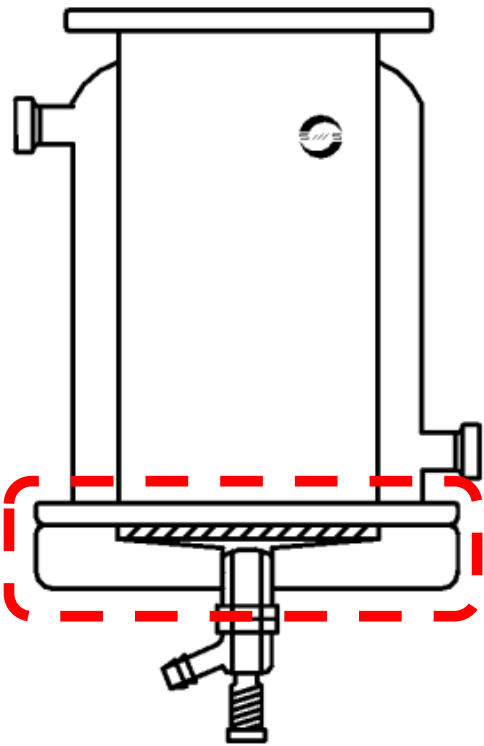
集成反应及热过滤
- !

夹套全覆盖
- !

Time and Cost Saving
- !

All-in-One Unit
- !

Complete Jacket Coverage



夹套全覆盖，保温效果显著
确保滤液不结晶

Full Jacket for Insulated
Filtration against Crystallization



聚四氟下展式放料阀
死体积最小化

PTFE Flush Drain Valve
Minimized Dead Space



FR – S20

(参数配置详见第40页)
(For spec and configuration, please see P.40)

双层过滤釜 - 热过滤

JACKETED GLASS FILTER



聚四氟乙烯釜盖，使用寿命超过十年，高精度带来更好密封性（<20mbar）和绝佳的搅拌平稳性

釜盖开口（可根据用户要求定制）

- 固料加料口 — 开关方便，并配有泄压阀
- 液料加料口 — 真空抽入液体物料
- 冷凝器 — 可加配分流瓶或分水蒸馏收集
- 恒压漏斗滴加 — 可控制定量定速液体加料

PTFE Lid with Lifespan >10years, Vacuum Tight up to <20mbar and Excellent Stirring Stability

Nozzles on Lid (Customizable per request)

- Solid feed nozzle with vacuum release valve
- Liquid feed valve – For liquid feeding
- Condenser – Optional Distillation Piece or Distillation Separation Receiving
- Funnel – Control liquid feeding speed and volume



机械升降装置

- 便于过滤件的装卸与更换。
- 便于滤饼的取出。
- 不锈钢结构，确保升降安全可靠。

Build-in Hand Lift

- Facilitate the change and install of filter.
- Facilitate the removal of filter cake.
- Strong structure. Safe and reliable.



可拆卸式底部过滤装置

- 聚四氟乙烯过滤件外罩，使用寿命超过十年。
- 结构紧凑，装卸快速便捷，单人即可完成过滤件的装卸工作。
- 过滤件更换便利，可选用不同形式、材质和孔径的过滤件。
- 滤饼可快速地从底部取出。
- 死体积最小化设计。

Detachable Bottom Filter

- Filter housing made of PTFE with lifespan >10 years.
- Compact structure for quick and easy install by a single person.
- Easy change of filter. Compatible with all kinds of filter.
- Filter cake can be easily removed.
- Minimized dead space.

基本参数		双层过滤釜 2L – 50L JACKETED GLASS FILTER 2L - 50L				
型号	Model	FR – S2	FR – S5	FR – S10	FR – S20	FR – S50
过滤釜容量(L)	Capacity (L)	2L	5L	10L	20L	50L
釜体结构	Reactor Vessel Structure	双层，夹套全覆盖 Double Wall, Fully Jacketed				
釜口直径(mm)	Lid Diameter (mm)	180 mm	180 mm	265 mm	265 mm	340 mm
滤液出料口直径(mm)	Filtrate Drain Diameter (mm)	10mm	10mm	25mm	25mm	25mm
釜盖接口尺寸与数量	Nozzle Size & No. on Lid	5 (NS19×2+NS24+NS29+DN35)		6 (NS24+NS29+NS34×2+DN50+DN60)		
可耐反应温度(℃)	Temp. Range (℃)	-60 - 200℃				
最高真空度(mbar)	Max Vacuum Level (mbar)	< 20 mbar (-0.098MPa)				
搅拌功率(W)	Stirring Power (W)	120 W	120 W	120 W	180 W	180 W
转速(rpm)	Rotation Speed (rpm)	0 - 300	0 - 300	0 - 300	0 - 300	0 – 300
搅拌棒直径(mm)	Diameter of Stirrer Shaft (mm)	10mm	10mm	20mm	20mm	25mm
玻璃材质	Glass Material	高硼硅玻璃 GG-17 Borosilicate Glass BG3.3				
机架材质	Frame Material	SUS304				
搅拌棒材质	Stirring Shaft Material	304不锈钢内芯, 外包聚四氟乙烯 SUS304 & PTFE Coated				
过滤件外罩材质	Filter Housing Material	PTFE				
整机尺寸(cm)	Dimension (cm)	35×46×130H	55×48×145H	72×48×165H	75×50×175H	115×80×220H
电源	Power Supply	220V/50Hz				

功能配置Configurations

	型号Model	FR – S2	FR – S5	FR – S10	FR – S20	FR – S50
变频调速	VFD Rotation Speed Control	●	●	●	●	●
齿轮减速	Gearbox	●	●	●	●	●
数字显示	Digital Display	转速，釜体物料温度 Rotation Speed, Reactor Temp.				
SiC+PTFE机械密封	SiC+PTFE Mechanical Seal	●	●	●	●	●
聚四氟乙烯釜盖	PTFE Lid	●	●	●	●	●
下展式聚四氟放料阀	PTFE Flush Drain Valve	●	●	●	●	●
PT100数显温度计	PT100 Digital Thermometer	●	●	●	●	●
真空表	Vacuum Meter	●	●	●	●	●
搅拌头类型	Agitator Type	螺旋式 Propeller				
高粘度防腐搅拌棒	High Viscosity Agitator	○	○	○	○	○
机械升降装置	Build-in Hand Lift	○	○	●	●	●
过滤件 - 滤膜	Filter Membrane	○	○	○	○	○
回流冷凝	Reflux Condensing	0.1m ²	0.14m ²	0.4m ²	0.4m ²	0.6m ²
恒压漏斗	Pressure Equalizing Funnel	250ml	250ml	500ml	1000ml	2000ml
液料加料阀	Liquid Feeding Valve	NS19	NS19	NS29	NS29	NS29
固料加料口	Solid Feeding Nozzle	○	○	DN60	DN60	DN60
滤液收集	Filter Liquid Receiving	○ (1L)	○ (3L)	○ (5L)	○ (10L)	○ (20L)
蒸馏分流瓶	Distillation Piece	○	○	○	○	○
分水蒸馏收集	Distillation Separation Receiving	○ (0.5L)	○ (1L)	○ (3L)	○ (5L)	○ (10L)
高强度机架脚轮	Heavy Duty Lockable Casters	●	●	●	●	●
聚四氟防腐机架涂层	PTFE Coated Frame	○	○	○	○	○

安全防护Safety Features

	型号Model	FR – S2	FR – S5	FR – S10	FR – S20	FR – S50
过电流保护	Over-current Protection	●	●	●	●	●
无火花电控系统	No-spark Electronic Control	●	●	●	●	●
防爆系统	EX-proof	○	○	○	○	○

标示含义：● - 标配，○ - 选配
Symbol Instruction: ● - Equipped，○ - Optional

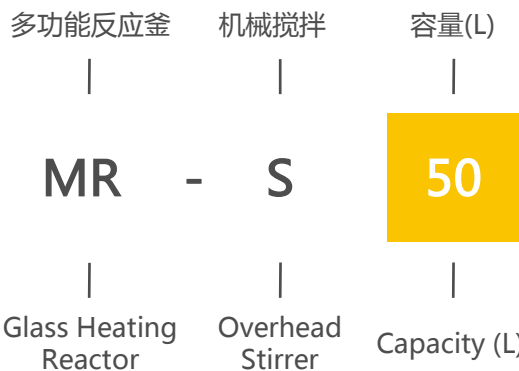
多功能玻璃反应釜（加热）

GLASS HEATING REACTOR

10 - 50L

应用于单一的加热或者冷却反应。加热反应通过浴锅实现，冷却反应则需要注入液氮等冷媒。较强的扩展性实现多种反应。

Designed for either heating or cooling reaction. Heating bath for heating or using coolant such as liquid nitrogen for cooling. Strong expandability to suit most reactions.



- A** 反应瓶及反应釜盖
标配搅拌，回流冷凝，恒压漏斗加料，抽料，抽真空，温度测量等功能。
(选配) 蒸馏，精馏，滴加，取样等功能。
- B** 减速马达配变频调速
转速恒定，扭力大，调速精确，每分钟最高转速达600转。(可升级防爆电机与调速箱)
- C** 智能温控浴锅
数字显示浴锅实际温度和设定温度。浴锅升温迅速，控温精确度为1℃。可选择油浴锅，最高温度可达180摄氏度。
- D** 碳化硅和聚四氟乙烯组合机械密封
防腐耐用，使用寿命>5年，实现<2mbar的高真空度。
- A** Reaction Flask and Lid
Configured: mixing, reflux condensing, funnel dripping, feeding, and temp. measuring.
Optional: distilling, rectifying, bubbling, separating, sampling, etc.
- B** Motor with Gearbox & VFD Speed Controller
Provides precise speed control, large torque with constant speed and maximum speed of 600 rpm. (EX proof is optional)
- C** Digital Heating Bath
Quick, precise heats water or oil and covers a wide temp. range from 0 – 99 °C (180 °C, oil bath). Digital display and setting of temp.
- D** SiC+PTFE Mechanical Seal
Ensures max vacuum level of <2mbar. Lifespan >5 years. Durable and resist to chemicals.



下出料
聚四氟乙烯直放式阀门，操作方便，无积液，无泄漏。

Bottom Discharge
PTFE Drain Valve.
Easy operation. No dead space and no leakage.

浴锅冷却盘管（选配）
可为浴锅加配冷却盘管，通入冷源后，实现迅速降温 and 低温反应。

Cooling Coil of Bath
Cooling coil is available for option for heating bath. With cooling source input, it can quickly cool down.

碳化硅和聚四氟乙烯组合机械密封
防腐耐磨，使用寿命>5年，实现<2mbar的高真空度。

- 釜顶功能配置**
- 冷凝器 — 可加配分流瓶或分水蒸馏收集
 - 液料加料口 — 真空抽入液体物料
 - 温度计口 — 配备温度计套管
 - 恒压漏斗滴加 — 定量定速液体加料
 - 固料加料口 — (选配件) 直径100mm

SiC+PTFE Mechanical Seal
Ensures max vacuum level of <2mbar.

- Reactor Top Configuration**
- Condenser – Optional Distillation Piece or Distillation Separation Receiving
 - Pressure Equalizing Funnel Dripping
 - Liquid Feeding
 - Thermowell
 - (Optional) 100mm Solid Feeding Nozzle



防爆系统
当设备需要在防爆区内使用时，应当选择防爆型反应釜。我们提供完备的防爆升级，包括电机、变频调速器、浴锅温控和整机电气等防爆升级服务。

防爆级别：EXdIIBT4

EX Proof
EX Proof is compulsory when reactor is stationed and operated in EX zone. We offer EX proof on Motor, Speed Controller, Heating Bath and Wiring per user needs.

EX Proof Rate: EXdIIBT4

(参数配置详见第44页)

(For spec and configuration, please see P.44)

多功能玻璃反应釜（加热）

BENCHTOP GLASS HEATING REACTOR

2 - 5L

台式多功能反应釜（2L - 5L）配备加热浴锅，是小试级加热合成反应的理想选择。

即使体积小，但功能配置与大型机类似，保证实验需求。配备坚固耐用的支架，确保机体平稳。

For small lab scale, we offer Benchtop Glass Heating Reactor (2L - 5L) which is equipped with heating bath.

Despite the capacity, benchtop reactor has the similar functions as pilot scale reactor to suit users' need, and is equipped with robust SUS304 frame to guarantee the stability of the whole structure.



机械密封
防腐耐磨，实现
<2mbar的高真空。

Mechanical Seal
Ensures max
vacuum level of
<2mbar.

釜盖功能配置
快开法兰卡箍
NS24 回流冷凝器
NS24 恒压漏斗
NS19 液料加料
NS19 温度计套管

Lid Configuration
Quick-open Clamp
NS24 Condenser
NS24 Funnel
NS19 Feed Valve
NS19 Thermowell



可升降浴锅，耐用可靠
Lift Heating Bath, Durable & Reliable

基本参数		多功能玻璃反应釜 2L - 50L GLASS HEATING REACTOR 2L - 50L			
Parameters					
型号	Model	MR - S2	MR - S5	MR - S20	MR - S50
反应釜容量(L)	Capacity (L)	2L	5L	20L	50L
釜盖直径(mm)	Lid Diameter (mm)	150 mm	150 mm	180 mm	180 mm
釜盖接口尺寸与数量	Nozzle Size & No.	4 (NS19×2+NS24×2)		4 (NS24+NS29×3)	
搅拌功率(W)	Stirring Power (W)	90 w	90 w	120 w	180 w
转速(rpm)	Rotation Speed (rpm)	50 - 1200	50 - 1200	20 - 600	20 - 600
浴锅功率(kW)	Heating Power (kW)	1.5 kW	2 kW	4 kW	6 kW
浴锅温控范围及精度(°C)	Temp. Control Range & Accuracy (°C)	0 - 99°C (180°C) ±1°C			
浴锅尺寸，容量及材质	Bath Size, Capacity, Material	Φ25×15H, 7L, SUS304	Φ28×17H, 10L, SUS304	Φ45×26H, 38L, SUS304	Φ55×35H, 76L, SUS304
浴锅升降行程(cm)	Bath Height Adjustment (cm)	12	13	/	/
最高真空度(mbar)	Max Vacuum Level (mbar)	< 2 mbar (-0.0998MPa)			
玻璃材质	Glass Material	高硼硅玻璃 GG-17 Borosilicate BG3.3			
机架材质	Frame Material	SUS304			
搅拌棒材质	Stirring Shaft Material	不锈钢内芯, 外包聚四氟乙烯 SUS304 & PTFE Coated			
整机尺寸(cm)	Dimension (cm)	32×25×80H	35×46×90H	45×52×170H	55×63×190H
电源	Power Supply	220V/50Hz	220V/50Hz	220V/50Hz	380V/50Hz

功能配置		Configurations			
型号	Model	MR - S2	MR - S5	MR - S20	MR - S50
变频调速	VFD Rotary Speed Control	/	/	●	●
齿轮减速	Gearbox	/	/	●	●
数字显示	Digital Display	转速，浴锅温度 Rotation Speed, Bath Temp.			
SiC+PTFE机械密封	SiC+PTFE Mechanical Seal	●	●	●	●
回流冷凝	Reflux Condensing	0.1m ²	0.14m ²	0.4m ²	0.6m ²
恒压漏斗	Pressure Equalizing Funnel	250ml	250ml	1000ml	2000ml
液料加料阀	Liquid Feeding Valve	NS19	NS19	NS29	NS29
温度计套管	Thermowell	●	●	●	●
真空表	Vacuum Meter	/	/	●	●
搅拌头类型	Agitator Type	锚式 Anchor	锚式 Anchor	螺旋式 Propeller	螺旋式+下压式 Propeller + Turbine
下出料	Bottom Discharge	/	/	○	○
直放式聚四氟放料阀	PTFE Drain Valve	/	/	○	○
油浴锅 (180°C)	Oil Bath (180°C)	○	○	○	○
5L滴加系统	Dripping System (5L)	/	/	○	○
蒸馏分流瓶	Distillation Piece	/	/	○	○
外接大容量蒸馏收集	Distillation Receiving	○ (1L)	○ (3L)	○ (5L)	○ (10L)
分水蒸馏收集	Distillation Separation Receiving	○ (1L)	○ (3L)	○ (5L)	○ (10L)
固体加料口	Solid Feeding Nozzle	/	/	○	○
浴锅冷却盘管	Cooling Coil of Bath	/	/	○	○
高强度机架脚轮	Heavy Duty Lockable Casters	/	/	●	●
聚四氟防腐机架涂层	PTFE Coated Frame	○	○	○	○

安全防护		Safety Features			
型号	Model	MR - S2	MR - S5	MR - S20	MR - S50
过电流保护	Over-current Protection	●	●	●	●
无火花电控系统	No-spark Electronic Control	●	●	●	●
防爆系统(升级)	EX Proof	/	/	○	○

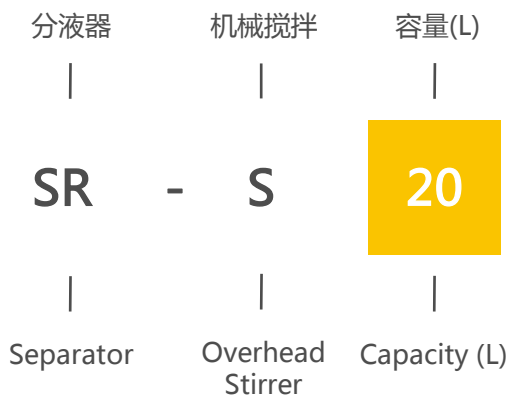
标示含义：/ - 不适用，● - 标配，○ - 选配
Symbol Instruction: / - Not Applicable，● - Equipped，○ - Optional

分液器 / 萃取釜
SEPARATOR / EXTRACTION REACTOR

10- 50L

应用于多种物料搅拌混合后进行化学或物理反应，在常温下，根据比重对新合成的物料进行分液提取。可在真空条件下进行快速且匀质的反应、分液和萃取。

Designed for mixing two or more kinds of solvents to perform efficient chemical or physical reaction under vacuum condition and room temperature. After reaction, reactants can be separated and extracted according to their different weights.



SR-S20



- A 减速马达配变频调速
转速恒定，扭力大，调速精确，每分钟最高转速达600转。（可升级防爆电机与调速箱 Ex）
- B 碳化硅和聚四氟乙烯组合机械密封，防腐耐磨，使用寿命>5年，并实现<2mbar的高真空度。
- C 锥形釜底设计，提供更高效率的分液效果。
- D 放料口配备分流双岔阀，便于观察分液情况。
- E （选配）玻璃挡流槽
釜体内壁可选配玻璃挡流槽，在搅拌中发挥截流功能，减少漩涡生成，使物料充分且快速混合。
- A Motor with Gearbox & VFD Speed Controller
Provides precise speed control, large torque with constant speed and maximum speed of 600 rpm. (EX Proof is optional Ex)
- B SiC+PTFE Mechanical Seal
Resist to chemicals and durable with lifespan >5 years. Ensures max vacuum level of <2mbar.
- C Taper Vessel Bottom for efficient separation.
- D Dual Branching Piece at bottom discharge for better observation on separation result.
- E (Optional) Glass baffles are to prevent vortex for efficient mixing.

Table with 7 columns: Parameters, Model, SR-S10, SR-S20, SR-S30, SR-S50, SR-S100. Rows include Capacity, Lid Diameter, Bottom Valve Diameter, Nozzle Size, Stirring Power, Rotation Speed, Diameter of Stirrer Shaft, Max Vacuum Level, Glass Material, Frame Material, Stirring Shaft Material, Agitator Material, Dimension, and Power Supply.

Table with 7 columns: Configurations, Model, SR-S10, SR-S20, SR-S30, SR-S50, SR-S100. Rows include VFD Rotation Speed Control, Gearbox, Digital Display of Rotation Speed, SiC+PTFE Mechanical Seal, PTFE Drain Valve, Liquid Feeding Valve, Vacuum Meter, Dual Agitator, Agitator Type, Dual Branching Piece, Dripping System (5L), Glass Baffles, Heavy Duty Lockable Casters, and PTFE Coated Frame.

Table with 6 columns: Safety Features, Model, SR-S10, SR-S20, SR-S30, SR-S50, SR-S100. Rows include Over-current Protection, No-spark Electronic Control, and EX Proof.

标示含义：● - 标配，○ - 选配
Symbol Instruction: ● - Equipped , ○ - Optional

相关配套设备
COMPLEMENTARY EQUIPMENT



冷热源 Heating/Cooling Source

真空源 Vacuum Source

真空泵
VACUUM PUMP



- 水循环真空泵，安全可靠，实用便利的真空泵。
- 有较高的防腐能力。
- 配备多个抽头，可同时为多台设备提供真空源，或为一台设备提供更快的抽速。
- 可为冷凝器提供循环冷水源，并通过水循环作业，显著降低水资源的浪费。
- Water circulation vacuum. Safe and reliable.
- Good resist to chemicals.
- Capable to offer vacuum source for several equipments or bigger suction rate for one unit.
- Can work as circulating water source for condenser to save water.
- 防腐隔膜真空泵，安全可靠，能提供最高2mbar (-0.0998Mpa) 的真空源。
- 应用聚四氟乙烯膜片，有很强的防腐能力。
- 真空稳定，能长时间不间断运行。
- 不消费水资源，环保性能强。
- Diaphragm pump, safe and reliable, can offer max vacuum level up to 2mbar.
- PTFE diaphragm, excellent resist to chemicals.
- Capable to work 24/7 and offer stable vacuum source.
- Environment friendly. No need for water.

基本参数 Parameters		真空泵 VACUUM PUMP			
	型号 Model	SHB-3A	SHZ-95B	MPC301T	MPC601T
种类 Type		水循环真空泵 Water Circulation Vacuum Pump		防腐隔膜真空泵 Diaphragm Pump	
配套旋蒸及 反应釜	Applicable Capacity of Rotary Evaporator & Glass Reactor	2L - 5L	10L - 50L	2L - 20L	10L - 50L
极限真空度 (mbar)	Max Vacuum Level (mbar)	20 mbar	20 mbar	8 mbar	2 mbar
抽速(L/min)	Suction Rate (L/min)	10L/min×2	10L/min×5	38L/min	63L/min
功率	Power (W)	180 W	380 W	180 W	180 W
整机尺寸(cm)	Dimensions (cm)	39×28×42H	45×35×82H	23×27×17H	49×33×30H
电源	Power Supply	220V/50Hz	220V/50Hz	220V/50Hz	220V/50Hz

单制冷循环器
COOLING CIRCULATOR



- 为物料的蒸发冷凝和双层玻璃反应釜夹套提供循环恒温冷源。
 - 提供 -80 °C ~ -15 °C 的恒温冷源。
 - 拥有多重安全保护，运行可靠。
 - 进口压缩机并配备复叠式制冷技术，确保低温时温度的稳定性。
 - 全密闭设计，导热介质低温运行过程中不吸水，保证导热介质的纯度，防止冰晶，提高导热介质的使用寿命。
- Cooling supply for Condenser of Rotary Evaporator and Jacketed Glass Reactor.
Temperature range from -80 °C to -15°C.
Copeland compressor with cascade refrigeration technology guarantees the stabilization under low temp.
Fully closed circulation of thermal oil ensures no imbibitions from air during cooling, which keeps the thermal oil remain pure and increases its lifespan.

Table with 9 columns: Parameters, DL-2005, LX-0400, LX-0700, LX-1000, LT-8030, LT-8062, LT-8090. Rows include temperature range, accuracy, flow rate, power, and circulation type.

单加热循环器
HEATING CIRCULATOR



- 为双层玻璃反应釜夹套提供循环恒温热源。
 - 提供300 °C 的恒温热源。
 - 拥有多重安全保护，运行可靠。
 - UC系类应用高温降温工艺，实现300 °C到50 °C的快速降温。
 - 全密闭设计，导热介质高温运行过程中无油雾挥发，减少导热介质氧化和褐化的风险，提高介质的使用寿命。
- Heating supply for Jacketed Glass Reactor.
Temperature control range up to 300°C.
UC series has fast cooling down function for cooling from 300 °C to 50 °C.
Fully closed circulation of thermal oil prevents oil mist and oxidation during heating to increase the lifespan of thermal oil.

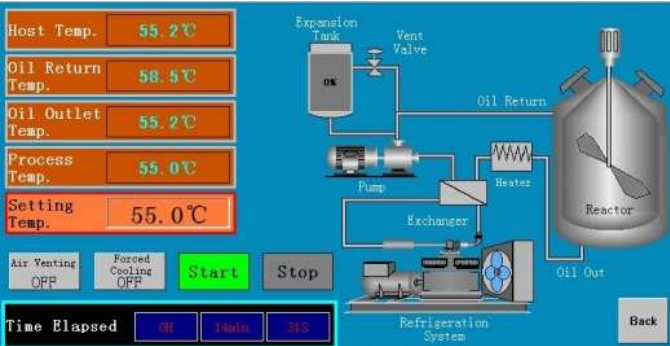
Table with 9 columns: Parameters, UC-1820, LY-5020, LY-A020, UC-5020, UC-A020, UC-5030, UC-A030. Rows include temperature range, accuracy, flow rate, power, and circulation type.

加热制冷循环一体机
THERMOSTAT – DYNAMIC CONTROL

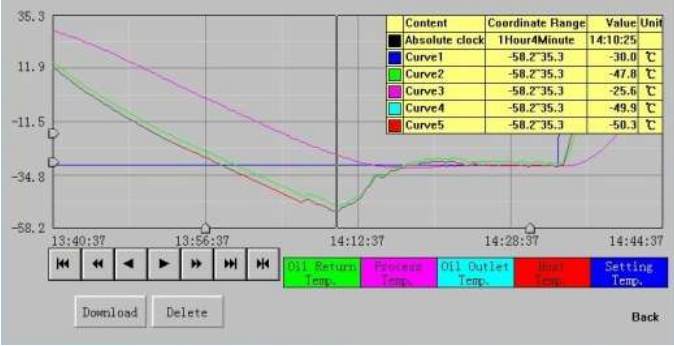


- 为双层反应釜提供冷热源，温控范围可达-90℃至250℃。
- 全密闭设计，使得导热介质高温不产生油雾，低温不吸水，显著提高使用寿命。
- 可精确控制物料温度，也可控制夹套油温。
- 拥有多重安全保护，运行可靠。
- 进口压缩机并配备复叠式制冷技术，确保低温时温度的稳定性。
- 彩色触摸屏控制，拥有RS485和以太网通讯接口及配套软件，可进行过程编程，数据记录导出，远程操控等。

- Provide both heating and cooling sources for Jacketed Glass Reactor.
- Wide temperature range from -90℃ to 250℃.
- Fully closed circulation of thermal oil prevents oil mist during heating and imbibitions from air when cooling, which keeps the thermal oil remain pure and increases its lifespan.
- High accuracy of temperature control of both jacket and reactant.
- LCD touchpad control with RS485 and Ethernet interface for process programming and recording.
- With various protection system, the whole operation is safe and reliable.



操作界面
HMI



温度曲线
Temperature Curve

基本参数 Parameters		加热制冷循环一体机 THERMOSTAT					
部分型号 Partial Model		SUNDI - 235	HR - 35	SUNDI - 255	HR - 50	SUNDI - 270	HR - 70
温控范围(℃) Temp. Ctrl Range (℃)		-25 - 200℃	-25 - 200℃	-25 - 200℃	-25 - 200℃	-25 - 200℃	-25 - 200℃
温控精度(℃) Temp. Ctrl Accuracy (℃)		1℃	1℃	1℃	1℃	1℃	1℃
温控对象 Control Target		物料，夹套 Reactant, Jacket	夹套 Jacket	物料，夹套 Reactant, Jacket	夹套 Jacket	物料，夹套 Reactant, Jacket	夹套 Jacket
循环流量 (L/min, Bar) Flow Rate (L/min, bar)		35L/min, 2bar	35L/min, 2bar	50L/min, 2bar	35L/min, 2bar	50L/min, 2bar	35L/min, 2bar
加热功率(kW) Heating Power (kW)		3.5kW	3.5kW	5.5kW	5.5kW	7kW	7kW
制冷功率(kW) Cooling Power @ 0℃ (kW)		3kW	3kW	4.5kW	4.5kW	6.6kW	6.6kW
制冷剂 Coolant		R-404A	R-404A	R-404A	R-404A	R-404A	R-404A
全密闭循环 Fully Closed Circulation		●	●	●	●	●	●
彩色触屏控制 LC D Touchpad HMI		●	○	●	○	●	○
过程编程控制 Process Programmable Ctrl		●	/	●	/	●	/
配套系统 For System Capacity		10L – 20L	10L – 20L	30L – 50L	30L – 50L	50L – 100L	50L – 100L
整机尺寸(cm) Dimension (cm)		50×68×145H	50×68×145H	50×68×145H	50×68×145H	50×68×145H	50×68×145H
电源 Power Supply		380V/50Hz	380V/50Hz	380V/50Hz	380V/50Hz	380V/50Hz	380V/50Hz

部分型号 Partial Model		SUNDI - 535	HRT - 35	SUNDI - 555	HRT - 50	SUNDI - 575	HRT - 70
温控范围(℃) Temp. Ctrl Range (℃)		-50 - 250℃	-50 - 250℃	-50 - 250℃	-50 - 250℃	-50 - 250℃	-50 - 250℃
温控精度(℃) Temp. Ctrl Accuracy (℃)		1℃	1℃	1℃	1℃	1℃	1℃
温控对象 Control Target		物料，夹套 Reactant, Jacket	夹套 Jacket	物料，夹套 Reactant, Jacket	夹套 Jacket	物料，夹套 Reactant, Jacket	夹套 Jacket
循环流量 (L/min, Bar) Flow Rate (L/min, bar)		35L/min, 1bar	50L/min, 1bar	50L/min, 1.5bar	50L/min, 1bar	75L/min, 1.5bar	50L/min, 1bar
加热功率(kW) Heating Power (kW)		3.5kW	3.5kW	5.5kW	5.5kW	7.5kW	7.5kW
制冷功率(kW) Cooling Power @ 0℃ (kW)		3kW	3kW	5kW	5kW	7kW	7kW
制冷剂 Coolant		R-404A	R-404A	R-404A	R-404A	R-404A	R-404A
全密闭循环 Fully Closed Circulation		●	●	●	●	●	●
彩色触屏控制 LC D Touchpad HMI		●	○	●	○	●	○
过程编程控制 Process Programmable Ctrl		●	/	●	/	●	/
配套系统 For System Capacity		10L – 20L	10L – 20L	30L – 50L	30L – 50L	50L – 100L	50L – 100L
整机尺寸(cm) Dimension (cm)		50×68×145H	50×70×145H	50×68×145H	50×70×145H	50×68×145H	50×70×145H
电源 Power Supply		380V/50Hz	380V/50Hz	380V/50Hz	380V/50Hz	380V/50Hz	380V/50Hz

部分型号 Partial Model		SUNDI - 735	SUNDI - 755	SUNDI - 775	SUNDI - 935	SUNDI - 955	SUNDI - 975
温控范围(℃) Temp. Ctrl Range (℃)		-70 - 250℃	-70 - 250℃	-70 - 250℃	-90 - 250℃	-90 - 250℃	-90 - 250℃
温控精度(℃) Temp. Ctrl Accuracy (℃)		1℃	1℃	1℃	1℃	1℃	1℃
温控对象 Control Target		物料，夹套 Material, Jacket	物料，夹套 Material, Jacket	物料，夹套 Material, Jacket	物料，夹套 Material, Jacket	物料，夹套 Material, Jacket	物料，夹套 Material, Jacket
循环流量 (L/min, Bar) Flow Rate (L/min, bar)		35L/min, 1bar	50L/min, 1.5bar	75L/min, 1.5bar	50L/min, 1.5bar	50L/min, 1.5bar	110L/min, 1.5bar
加热功率(kW) Heating Power (kW)		3.5kW	5.5kW	7.5kW	3.5kW	5.5kW	7.5kW
制冷功率(kW) Cooling Power @ 0℃ (kW)		3.5kW	5.5kW	7.5kW	3.5kW	5.5kW	7.5kW
制冷剂 Coolant		R-404A/R23	R-404A/R23	R-404A/R23	R-404A/R508B	R-404A/R508B	R-404A/R508B
全密闭循环 Fully Closed Circulation		●	●	●	●	●	●
彩色触屏控制 LC D Touchpad HMI		●	●	●	●	●	●
过程编程控制 Process Programmable Ctrl		●	●	●	●	●	●
配套系统 For System Capacity		10L – 20L	30L – 50L	50L – 100L	10L – 20L	30L – 50L	50L – 100L
整机尺寸(cm) Dimension (cm)		55×70×135H	55×70×135H	55×70×160H	55×70×160H	70×80×165H	70×80×165H
电源 Power Supply		380V/50Hz	380V/50Hz	380V/50Hz	380V/50Hz	380V/50Hz	380V/50Hz

标示含义：/- 不适用，● - 标配，○ - 选配
Symbol Instruction: / - Not Applicable，● - Equipped，○ - Optional

防爆型加热制冷器 – 隔爆与正压防爆
EX PROOF THERMOSTAT

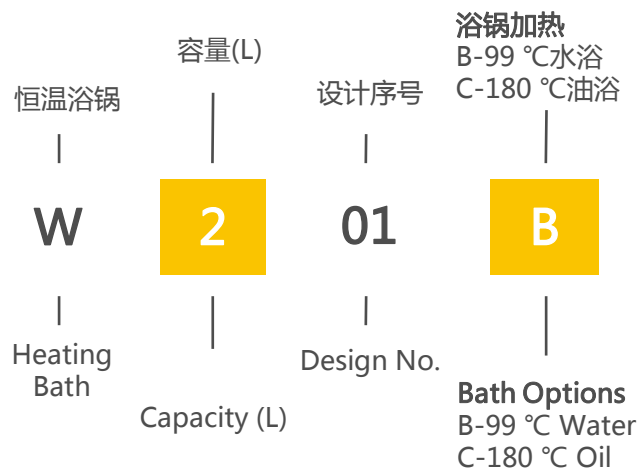


防爆系统
当设备需要在防爆车间或防爆区内使用时，应当选择防爆型。根据客户需要，我们提供完备的防爆升级。
防爆类型为：
■ 隔爆型，防爆等级：EXdIIBT4
■ 正压防爆，防爆等级：EXpxdmbIICT4
加热制冷循环一体机 – 正压防爆型，防爆等级：EXpxdmbIICT4
单制冷循环器 – 正压防爆型，防爆等级：EXpxdmbIICT4
由于隔爆措施无法应用于压缩机，因此应用隔爆技术只能实现部分防爆。为实现整机防爆，我们提供正压防爆技术。正压防爆是将整台设备置于正压防爆柜内，通入压缩气体后，在正压防爆柜内形成微正压，从而确保设备实现整机防爆。
单加热循环器 – 隔爆型，防爆等级：EXdIIBT4

EX Proof
EX Proof is compulsory when the thermostat is stationed and operated in EX zone in which there is explosive gas or dust. We offer EX proof upgrade per user needs.
EX Proof Type:
■ Isolation EX Proof – Rate: EXdIIBT4
■ Positive Pressure EX Proof – Rate: EXpxdmbIICT4
Thermostat – Positive Pressure EX Proof, Rate: EXpxdmbIICT4
Cooling Circulator – Positive Pressure EX Proof, Rate: EXpxdmbIICT4
Positive pressure EX proof is a must because isolation EX proof is not applicable to the compressor. The whole machine is put in the Positive Pressure EX Proof Cabinet. With positive pressure in the cabinet by air input, the whole machine is completely EX proof.
Heating Circulator – Isolation EX Proof, Rate: EXdIIBT4

数控恒温浴锅 (2L – 50L)
DIGITAL HEATING BATH (2L – 50L)

- 可作为旋转蒸发器浴锅，也可与搅拌器配套进行各种加热反应。
 - 浴锅升温迅速，PT100温度反馈，温度数显。
 - 浴锅可选择电动（10L- 50L）和手动升降（2L – 50L）。
 - PID智能温度控制，温精确度为1℃。
 - 水浴温控范围：0 – 99℃，选配油浴可达180℃。
 - 锅体304不锈钢材质，'坚固耐用。
 - 可升级防爆浴锅，防爆等级：EXdIIBT4。
- For heating reaction. Can work with rotary evaporator and overhead stirrer.
Quick, precise heats water or oil and covers a wide temp. range from 0 – 99℃ (180℃, oil bath).
PT100 temp. feedback with continuous digital display of the actual temp. and temp. set point.
PID temperature control with accuracy of 1℃.
Motorized lift mechanism is available for 10L – 50L.
Hand lift mechanism is available for 2L – 50L.
EX proof upgrade for option. EX proof rate: EXdIIBT4.



基本参数 Parameters		数控恒温浴锅 DIGITAL HEATING BATH				
型号 Model		W201B	W205B	W502B	W1002B	W2002B
油浴锅型号 Oil Bath Model		W201C	W205C	W502C	W1002C	W2002C
浴锅功率(kW) Heating Power (kW)		1.5 kW	1.5 kW	2 kW	3 kW	4 kW
浴锅温控范围及精度(℃) Temp. Control Range & Accuracy (°C)		20 - 99℃ (180℃) ±1℃				
温度反馈 Temp. Feedback		PT100				
温度控制 Temp. Controller		PID				
浴锅尺寸，容量及材质 Bath Size, Capacity, Material		Φ25×15H, 7L, SUS304	Φ25×15H, 7L, SUS304	Φ28×17H, 10L, SUS304	Φ35×25H, 22L, SUS304	Φ45×26H, 38L, SUS304
浴锅自动/手动升降 Motorized / Hand Lift		/	Hand Lift	Hand Lift	Motorized Lift	Motorized Lift
浴锅升降行程(cm) Height Adjustment (cm)		/	12	13	14	16
整机尺寸(cm) Dimensions (cm)		36×30×22H	36×30×22H	39×33×26H	40×38×30H	50×50×32H
电源 Power Supply		220V/50Hz	220V/50Hz	220V/50Hz	220V/50Hz	220V/50Hz
防爆系统 EX-proof		/	/	/	○	○

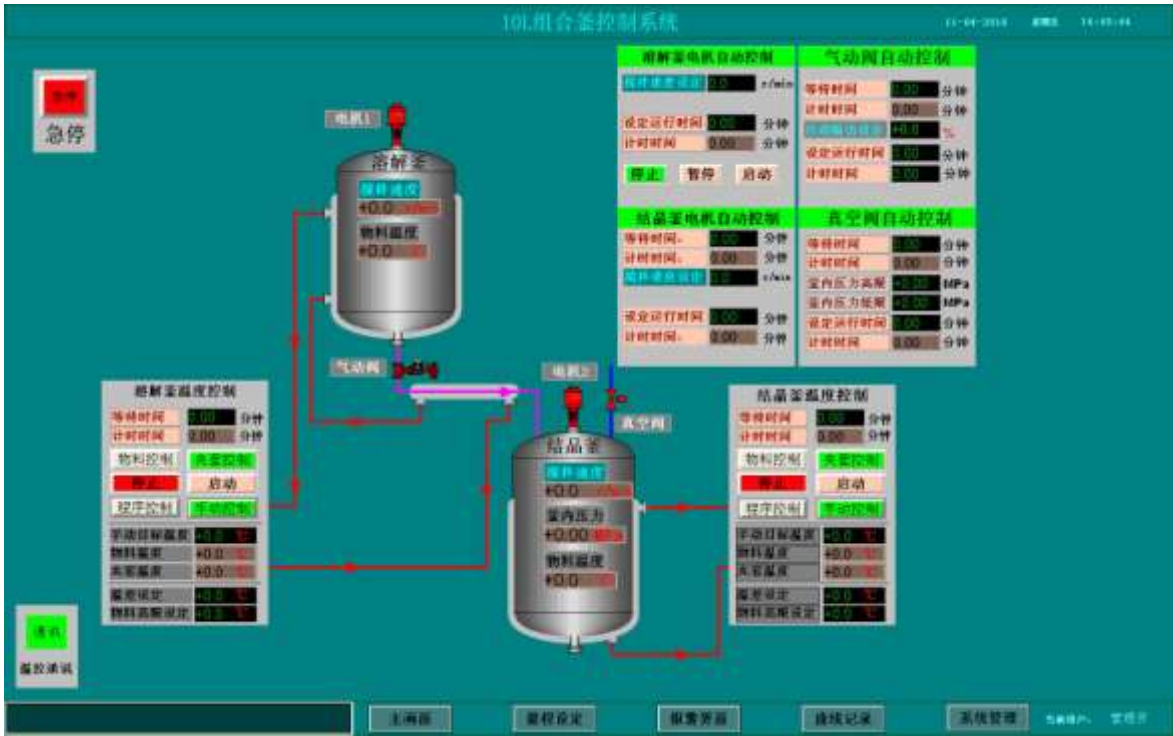
标示含义：/- 无，○ - 选配
Symbol Instruction: / - None , ○ - Optional

自动化与集成 – 显著提高生产力

AUTOMATION & INTEGRATION - PRODUCTIVITY

上海申胜不仅制造优质可靠的设备，也是经验丰富的自动化与集成解决方案专家。基于二十年的行业经验，我们提供的解决方案，旨在：

- 全面提升操作的安全性。特别是在易燃、易爆及有害的高危领域。
- 显著提升生产力。
- 提高工艺实施的稳定性。
- 降低人为差错对系统运行的风险。
- 提高现场的洁净度和环境友好性。



案例：重结晶系统自动化集成方案

集成控制点：搅拌速率及方向、温度、真空度、阀门开闭、定量进料及放料

应用效果：生产效率提高400%

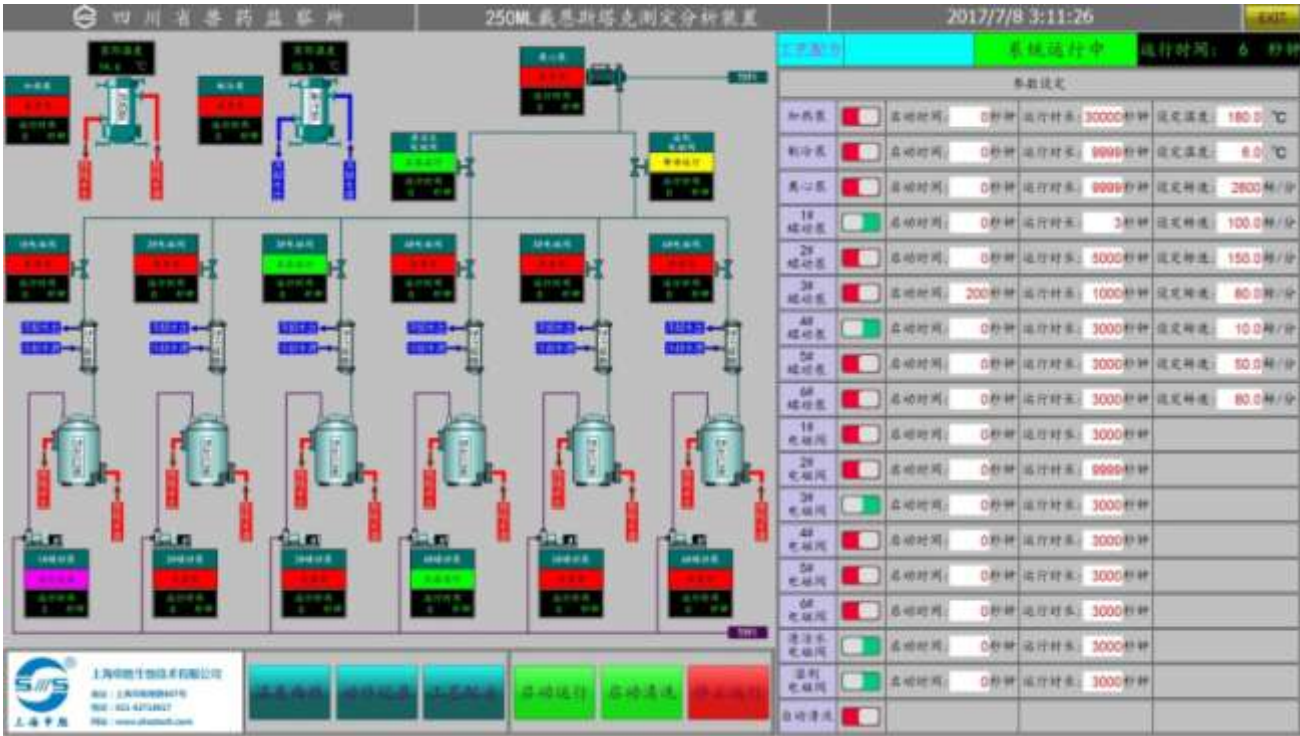
Case Sharing – Re-crystallization System

Integration Point – Stirring speed & direction, temperature, vacuum level, valve, quantitative feeding & discharge

Achievement – Increase productivity >400%.

As a leading manufacturer of quality and reliable equipment, Shanghai Shensheng is also an automation and integration solution provider. Based on 20 years' industrial experience, we provide solution to:

- Secure the operation, especially in hazardous area.
- Increase the productivity significantly.
- Stabilize the process implementation.
- Reduce the risk on system failure by human error.
- Improve cleanness and environment friendly on site.



案例：药物提取自动化集成方案

集成控制点：温度、在线清洗、物料流向、真空度、阀门开闭、定量进料及放料

应用效果：生产效率提高300%

Case Sharing – API Extraction System

Integration Point – Temperature, CIP, flow direction, vacuum level, valve, quantitative feeding & discharge

Achievement – Increase productivity >300%.

恒速搅拌器 (40W – 90W)

OVERHEAD STIRRER (40W – 90W)



S-40C



S-90C



S-90BC

应用于10L以下容量的液相或固液混合搅拌。坚固耐用，超长寿命（>5年）是恒速搅拌器的主要特点。

- 搅拌功率：40W, 90W；
- 无刷感应电机，安全可靠；
- 电子无级变速，调速范围：50 – 1200 rpm；
- 可选转速数显；
- 恒速搅拌，搅拌速度不因物料粘稠而下降；
- 304不锈钢机架，坚固耐用。

Suitable for stirring of <10L capacity. Robust, reliable, durable with long service span >5 years.

- Stirring power: 40W, 90W;
- Brushless AC induction motor, safe, durable, no noise;
- Stepless speed control with range of 50 - 1200 rpm;
- Constant speed stirring. Torque changes with the viscosity of material to ensure desired stirring speed;
- SUS304 structure;
- Digital display of stirring speed is optional.

基本参数 Parameters		40W - 90W恒速搅拌器 40W – 90W OVERHEAD STIRRER					
型号 Model		S - 40	S - 40C	S - 90	S - 90C	S - 90B	S - 90BC
产品特点 Features		恒速 Constant Speed	恒速，数显 Constant Speed Digital	恒速 Constant Speed	恒速，数显 Constant Speed Digital	恒速，平稳 Constant Speed Stable	数显、平稳 Constant Speed Stable
搅拌功率(W) Stirring Power (W)		40 W	40 W	90 W	90 W	90 W	90 W
转速(rpm) Rotation Speed (rpm)		50 - 1200	50 - 1200	50 - 1200	50 - 1200	50 - 1200	50 - 1200
最大转矩(Ncm) Max Torque (Ncm)		32	32	72	72	72	72
夹头(mm) Collet (mm)		Φ2 - 6	Φ2 - 6	Φ2 - 6	Φ2 - 6	Φ2 - 6	Φ2 - 6
搅拌容量(L) Stir Capacity (L)		1 - 3L	1 - 3L	2 - 10L	2 - 10L	2 - 10L	2 - 10L
机架材质 Frame Material		SUS304	SUS304	SUS304	SUS304	SUS304	SUS304
底盘尺寸(cm) Base Size (cm)		28×34	28×34	28×34	28×34	35×46	35×46
整机尺寸(cm) Dimension (cm)		28×34×80H	28×34×80H	28×34×90H	28×34×90H	35×46×90H	35×46×90H
电源 Power Supply		220V/50Hz	220V/50Hz	220V/50Hz	220V/50Hz	220V/50Hz	220V/50Hz
转速数字显示 Digital Display		/	●	/	●	/	●

强力恒速搅拌器 (120W – 180W)

OVERHEAD STIRRER – STRONG



应用于50L以下容量的液相或固液混合搅拌。坚固耐用，超长寿命（>5年）、强劲扭力是强力型恒速搅拌器的主要特点。

- 搅拌功率：120W, 180W；
- 无刷感应减速电机，扭力强劲，安全可靠；
- 变频器调速，调速精确，扭矩稳定，数显转速；
- 转速数显，调速范围：20 – 600 rpm；
- 恒速搅拌，搅拌速度不因物料粘稠而下降；
- 大底盘，三立柱，运行更平稳，适合与浴锅配套；
- 304不锈钢机架，坚固耐用。

Suitable for stirring of <50L capacity. Robust, reliable, powerful, durable with long service span >5 years.

- Stirring power: 120W, 180W;
- Gear motor with large torque, safe and durable;
- Variable Frequency Drive (VFD) precise control of stirring speed, control range: 20 - 600 rpm;
- Constant speed stirring. Torque changes with the viscosity of material to ensure desired speed;
- SUS304 structure, durable and stable, suitable to work with heating bath;
- Digital display of stirring speed.

基本参数 Parameters		120W – 180W恒速搅拌器 120W – 180W OVERHEAD STIRRER	
型号 Model		S – L120G	S – L180G
产品特点 Features		扭力大，平稳，控速精确，数显 Strong, Stable, Precise, Digital	
搅拌功率(W) Stirring Power (W)		120 W	180 W
转速(rpm) Rotation Speed (rpm)		20 - 600	20 - 600
最大转矩(Ncm) Max Torque (Ncm)		288	432
夹头(mm) Collet (mm)		Φ4 - 12	Φ4 - 12
搅拌容量(L) Stir Capacity (L)		10 - 30L	10 - 50L
机架材质 Frame Material		SUS304	SUS304
底盘尺寸(cm) Base Size (cm)		35×46	35×46
整机尺寸(cm) Dimension (cm)		35×46×110H	35×46×110H
电源 Power Supply		220V/50Hz	220V/50Hz
转速数字显示 Digital Display		●	●
变频调速 VFD Speed Controller		●	●
减速器 Gearbox		●	●